

1. VERIFY ALL HVAC & KITCHEN EQUIPMENT PRIOR TO ROUGH IN.
2. TELEPHONE/DATA/TV CABLES AND WIRES, 0TERMINATIONS, AND ALL REQUIRED CABLE AND JACKS WILL BE INSTALLED BY THIRD PARTY.
3. POWER SUPPLY FOR COMPUTER, CASH REGISTER (86A & 94) SHALL BE ON THE SAME CIRCUIT BREAKER. W/ISOLATED GROUND & ORANGE RECEPTACLE.
4. CIRCUITRY SHOWN WITHOUT TICKS SHALL HAVE (2) WIRES PLUS EQUIPMENT GROUNDING CONDUCTOR.
5. ALL MULTI-WIRE BRANCH CIRCUITS SHALL HAVE SEPARATE NEUTRALS TO MEET THE REQUIREMENTS OF NEC 210.4(B).
6. TRANSFORMERS SHALL BE MOUNTED ABOVE CEILING BELOW TRUSSES WITH LOW VOLTAGE WIRING FEEDING TO ALL EXTERIOR LIGHTS.

## POWER PLAN GENERAL NOTES

2

NOT TO SCALE

E-100

1. CIRCUITRY/CONDUIT FOR FRONT LINE EQUIPMENT TO BE ROUTED IN CASEWORK TO J-BOX IN WALL AND CONCEAL IN WALL.
2. PROVIDE SEALS AND EXPANSION COUPLINGS ON ALL CONDUITS ENTERING / LEAVING AREA OF TEMPERATURE DIFFERENCE.
3. PROVIDE (2) 1-1/2" CONDUITS WITH PULL STRINGS FROM CASH REGISTER TO MANAGER STATION.
4. SEE 'MANAGER STATION ELEVATION' 1 / E-200 FOR ADDITIONAL OUTLETS AND J-BOXES.
5. ANSUL PULL STATION. REFER TO DETAIL, SHEET 2 / E-400.
6. REFER TO 'LTG AND DOOR HEATER' WIRING DIAGRAM, SHEET 10 / E-400.
7. REFER TO 'COOLER EVAPORATOR COIL' WIRING DIAGRAM, SHEET 8 / E-400.
8. SHOW WINDOW RECEPTACLE SHALL BE CONTROLLED VIA SWITCH "1". REFER TO LIGHTING SWITCHBANK SCHEDULE, SHEET 4 / E-101. RECEPTACLE SHALL BE MOUNTED IN WALL AS CLOSE TO TOP OF STRUCTURAL HEADER AS POSSIBLE.
9. W.P. J-BOX FOR SIGNAGE PROVIDED BY LANDLORD. COORDINATE LOCATION WITH ARCHITECT / OWNER / SIGN PACKAGE. SIGN DISCONNECT PROVIDED BY SIGN CONTRACTOR.
11. NOT USED
12. NOT USED
13. GAS WATER HEATER: FEED RECEPTACLE WITH 2 #12, 1 #12 GROUND, 3/4" CONDUIT. FURNISH AND INSTALL RECEPTACLE AND CORD AND PLUG. COORDINATE THE EXACT CONFIGURATION WITH THE WATER HEATER SUPPLIER.
14. HOOD CONTROL PANEL / ANSUL SYSTEM CABINET. MOUNT CABINET DIRECTLY BELOW T-BAR CEILING.
15. PROVIDE 2-GANG J-BOX @ 48" AFF FOR HOOD CONTROL SWITCHES. REFER TO M-400, M-401 AND M-402.
16. CONDUIT STUB UP LOCATION IN STAINLESS STEEL POWER PANEL FOR ISLAND KITCHEN EQUIPMENT CONNECTION. REFER TO DETAIL 2 / A-109. COORDINATE LOCATION WITH ARCHITECT / OWNER.
17. ROUTE CABLING / CIRCUITRY THROUGH CONDUIT IN SLAB (KEYED NOTE #16).
18. UTILIZE SEAL TIGHT CONDUIT FOR ALL WIRING INCLUDED ALONG LOW WALL PANEL.
19. ALL DEVICES UNDER HOOD TO BE CONNECTED THROUGH SHUNT-TRIPPED CONTACTOR REFER TO 13/E-400 AND COOKLINE ELECTRICAL ELEVATIONS, 6 / E-200.
20. SIMPLEX RECEPTACLE TO BE CONNECTED TO BACK-OF-HOUSE LIGHTING CIRCUITRY/CONTROL. CONTRACTOR TO PROVIDE PIGTAIL FROM CIRCULATION PUMP.
21. PROVIDE WEATHERPROOF GFI RECEPTACLE FOR HEAT TAPE. COORDINATE FINAL LOCATION WITH REFRIGERATION INSTALLER.
22. ELECTRIC GRILL '23E' FEED WITH (2) #6, (1) #10 GROUND, 3/4" CONDUIT. REFER TO DETAIL, SHEET 4 / E-200.
23. NOT USED
24. FURNISH AND INSTALL (2) HUBBELL GFSTBF20 FACELESS GFCI (OR EQUIVALENT) (1) FOR EACH CIRCUIT FEEDING EQUIPMENT BENEATH THE KITCHEN HOOD WHICH UTILIZES SIMPLEX 120V RECEPTACLES. INSTALL IN AN ACCESSIBLE LOCATION IN THIS GENERAL AREA, OR AS DIRECTED BY THE OWNER, ARCHITECT OR ENGINEER. PROVIDE ADDITIONAL OUTLETS AS REQUIRED TO FEED ALL SUCH LOADS BENEATH HOOD. FASTEN A PLASTIC LABEL STATING CIRCUIT AND EQUIPMENT SERVED FOR EACH OUTLET.
25. PROVIDE WP-IN-USE COVER, RED DOT #CKSUV.
26. CONTRACTOR TO ENSURE THAT ELECTRICAL OUTLET SHOWN FALLS BENEATH TABLE TOP. REFER TO ARCHITECTURAL FURNITURE PLAN FOR EXACT LOCATION.
27. NOT USED
28. SEE DRINK STATION ELEVATIONS, SHEET 5 / E-200.
29. W.P. J-BOX FOR LIGHT FIXTURES PROVIDED BY LANDLORD. COORDINATE IN FIELD FOR EXACT LOCATION FOR J-BOX AND ANY ADDITIONAL REQUIREMENTS PRIOR TO STARTING ANY WORK AND INCLUDE ALL ASSOCIATED COSTS IN THE BID.
30. SEE P.O.S. AND SERVICE LINE ELEVATIONS, SHEET 3 / E-200.
31. NOT USED
32. NOT USED
33. NOT USED
34. REFER TO SHEET 9 / E-200 FOR INSTALLATION OF CO2 MONITOR.
35. SEE SWITCH BANK ELEVATION , SHEET 7 / E-200.
36. CONTRACTOR SHALL PROVIDE CONTROL WIREING FOR EVAPORATOR COIL SERVICE SWITCH TO CONDENSOR ON ROOF TO SHUT DOWN SIMUTANEOUSLY WITH EVAPORATOR WHEN INTERIOR EVAPORATOR, BLOWER, FANS ARE BEING SERVICED OR CLEANED. COORDINATE WITH EQUIPMENT MANUFACTURER PRIOR TO START OF WORK.
37. FLY LIGHT RECEPTACLE SHALL BE INSTALLED WITH A RECESSED CLOCK OUTLET. TYP. OF 3 LOCATIONS. PROVIDE GFCI IN KITCHEN AREAS. REFER TO DETAIL 10/E-200.
38. SEE SECURITY KEY PAD ELEVATION 1 / E-200.
39. CONNECT HEAT LAMPS TO COUNTER-MOUNTED SWITCH PROVIDED AND INSTALLED BY CONTRACTOR. REFER TO PLAN FOR LOCATIONS AND QUANTITIES.
40. PANDA EXPRESS TO PROVIDE CO2 MONITOR, E.C. TO MOUNT OVER J-BOX WITH WIRING THROUGH WALL CONDUIT FOR CLEAN INSTALLATION. PROVIDE ALL OTHER REQUIRED CONNECTIONS AND COMPONENTS FOR FULLY WORKING SYSTEM.
41. NOT USED
42. NOT USED
43. NOT USED

#

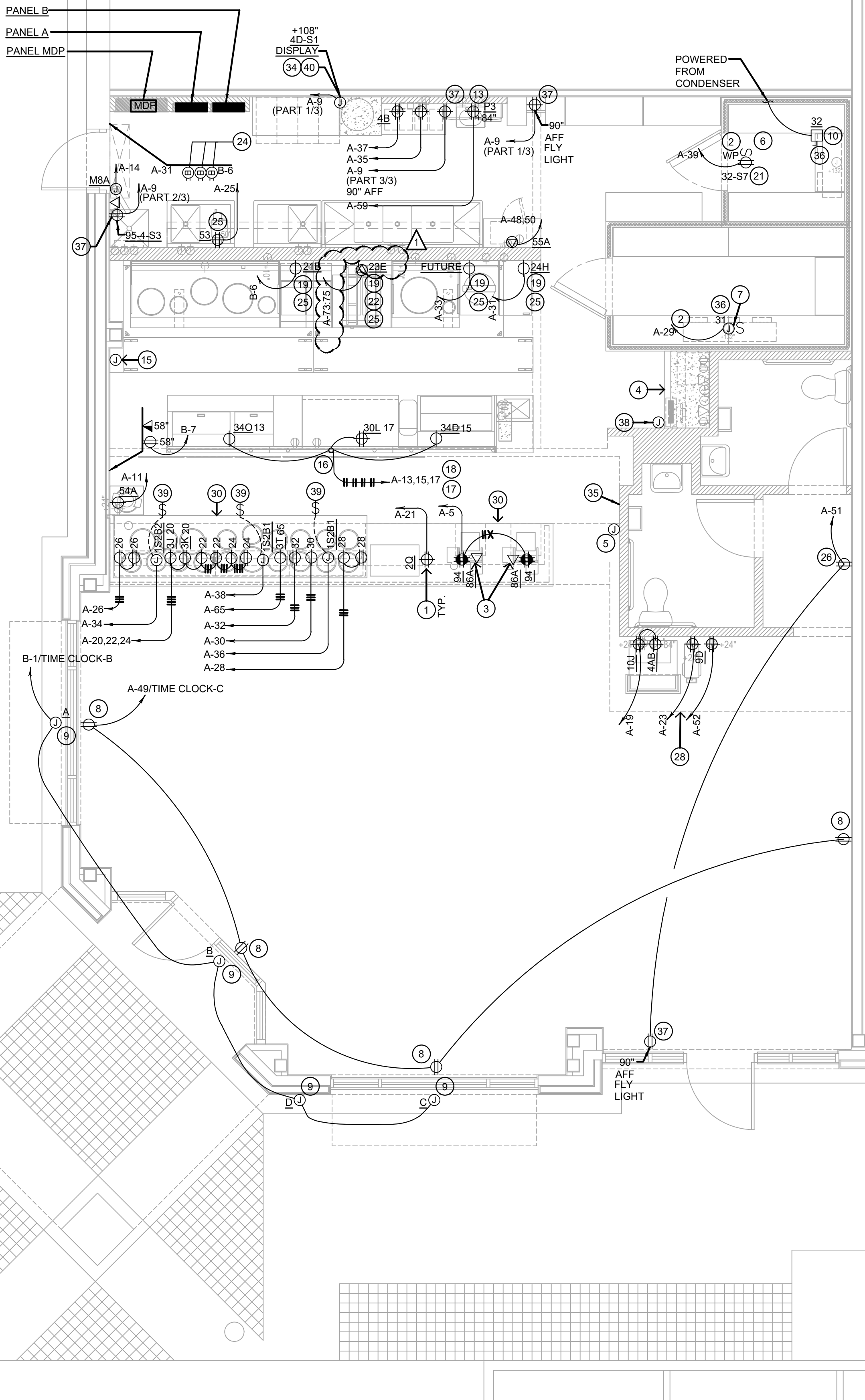
## POWER PLAN KEYED NOTES

3

NOT TO SCALE

E-100

NO UNDER SLAB ELECTRICAL WORK ALLOWED UNLESS OTHERWISE NOTED ON PLAN.



ALL 120 VOLT, 20 AMP RECEPTACLES LOCATED UNDER COUNTERS WITHIN SERVING AREA 101, DRIVE-THRU 102, AND KITCHEN 103 TO BE SERVED FROM GFCI-TYPE CIRCUIT BREAKERS PER NEC 210.8 (B) (2). ALL OTHER KITCHEN 120 VOLT RECEPTACLES SHALL PROVIDE GFCI RECEPTACLES.

## POWER FLOOR PLAN

1

Scale: 1/4"=1'-0"

E-100



PANDA RESTAURANT GROUP INC.

1683 Walnut Grove Ave.  
Rosemead, California  
91770

Telephone: 626.799.9898  
Facsimile: 626.372.8288

All ideas, designs, arrangement and plans indicated or represented by this drawing are the property of Panda Express Inc. and were created for use on this specific project. None of these ideas, designs, arrangements or plans may be used by or disclosed to any person, firm, or corporation without the written permission of Panda Express Inc.

### REVISIONS:

NO.	COMMENTS/OWNER REV	DATE
1		
2		
3		
4		
5		
6		
7		
8		
9		
10		
11		
12		
13		
14		
15		
16		
17		
18		
19		
20		
21		
22		
23		
24		
25		
26		
27		
28		
29		
30		
31		
32		
33		
34		
35		
36		
37		
38		
39		
40		
41		
42		
43		

### ISSUE DATE:

NO.	ISSUE DATE	DATE
1	CHECK SET	10-23-20
2	PERMIT SET	03-15-21
3	BID SET	04-02-21
4		
5		
6		
7		
8		
9		
10		
11		
12		
13		
14		
15		
16		
17		
18		
19		
20		
21		
22		
23		
24		
25		
26		
27		
28		
29		
30		
31		
32		
33		
34		
35		
36		
37		
38		
39		
40		
41		
42		
43		

DRAWN BY: KTF / EJP

PANDA PROJECT #: S4-21-D7864

ARCH PROJECT #: P7350



## PANDA EXPRESS

END CAP - TENANT BUILD OUT  
4501 S LABURNUM AVE  
RICHMOND VA, 23231

E-100

POWER FLOOR PLAN