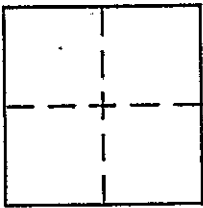


**CORNER RECORD**Document Number CR 1052City of OAKLANDCounty of ALAMEDA, CaliforniaBrief Legal Description LOT 154, (130 M 33)**CORNER TYPE**

Government Corner ☐ Control ☐  
 Meander ☐ Property ☒  
 Rancho ☐ Other ☐  
 Date of Survey 10-27-98

**COORDINATES (Optional)**

N. \_\_\_\_\_  
 E. \_\_\_\_\_  
 Zone \_\_\_\_\_ NAD27 ☐ NAD83 ☐  
 NAD83 Epoch \_\_\_\_\_  
 Elev. \_\_\_\_\_  
 Vert. Datum: NGVD29 ☐ NAVD88 ☐  
 Meas. Units: Metric ☐ Imperial ☐

Corner -- Left as found ☒ Found and tagged ☐ Established ☒ Reestablished ☐ Rebuilt ☐

Identification and type of corner found: Evidence used to identify or procedure used to establish or reestablish the corner:

FOUND POINTS AS SHOWN ON REVERSE.

A description of the physical condition of the monument as found and as set or reset: \_\_\_\_\_

SET POINTS AS SHOWN ON REVERSE.

**SURVEYOR'S STATEMENT**

This Corner Record was prepared by me or under my direction in conformance with the Land Surveyor's Act on 3-9-99

Signed [Signature] P.L.S. No. 7136

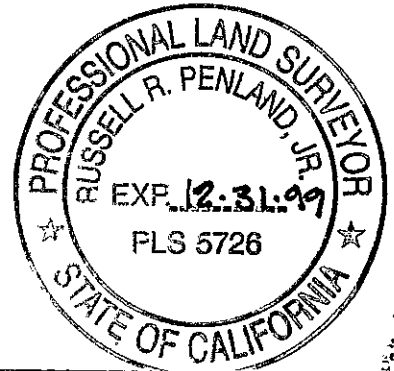
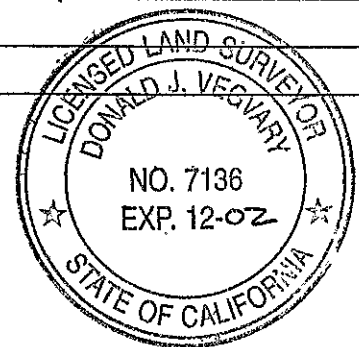
**COUNTY SURVEYOR'S STATEMENT**

This Corner Record was received 10-30-98  
 and examined and filed 4-9-99

Signed Russell R. Penland, Jr. P.L.S. or R.C.E. No. 5726

Title Deputy County Surveyor

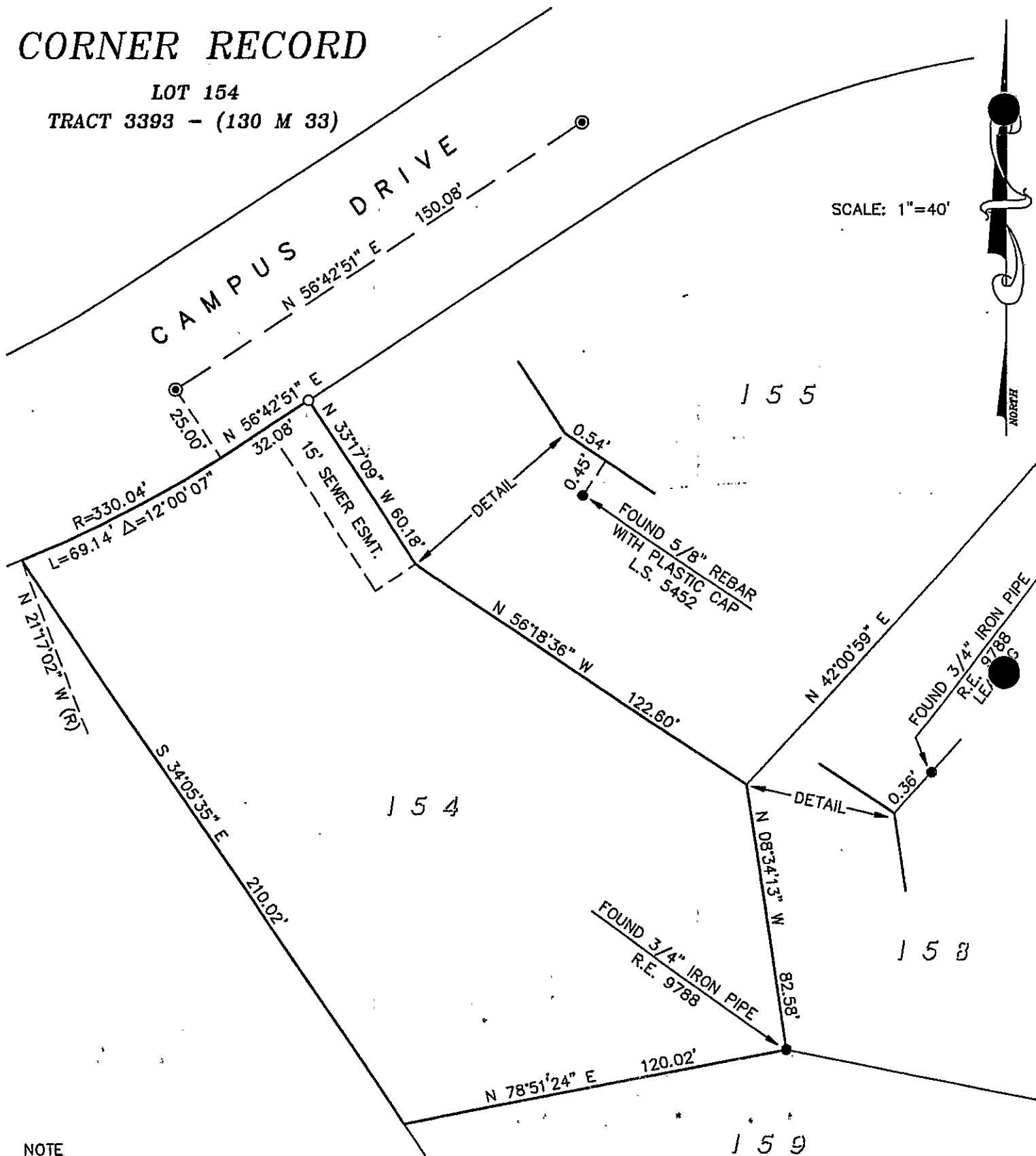
County Surveyor's Comment \_\_\_\_\_



# CORNER RECORD

**LOT 154**

**TRACT 3393 - (130 M 33)**



**NOTE**

ALL DISTANCES SHOWN HEREON ARE GROUND DISTANCES,  
AND WERE CALCULATED BY MULTIPLYING THE GRID DISTANCES  
SHOWN ON TRACT 3393 BY A FACTOR OF 1.0001187.

**VEGVARY & VEGVARY**  
**CIVIL ENGINEERING - LAND SURVEYING**  
**40 TERRA TERESA**  
**LAFAYETTE, CA 94549**  
**(925) 947-1051**

### LEGEND

- FOUND STANDARD STREET MONUMENT  
WITH DISC IN CONCRETE
- FOUND POINT AS NOTED
- SET 5/8" REBAR & PLASTIC CAP, L.S. 7136