

♩ = 120

Measures 1-4 of the piece. The key signature is three sharps (F#, C#, G#) and the time signature is 3/4. The music features a complex melodic line in the right hand with many beamed sixteenth and thirty-second notes, and a more rhythmic bass line. Measure 4 ends with a triplet of eighth notes in the right hand.

5

Measures 5-8. The right hand continues with intricate melodic patterns, including a triplet in measure 8. The bass line provides harmonic support with chords and moving lines.

10

Measures 9-12. The melodic development continues in the right hand, with a mix of eighth and sixteenth notes. The bass line features some sustained notes and moving lines.

13

Measures 13-15. The right hand has a more active melodic line with many beamed notes. The bass line has some sustained chords and moving lines.

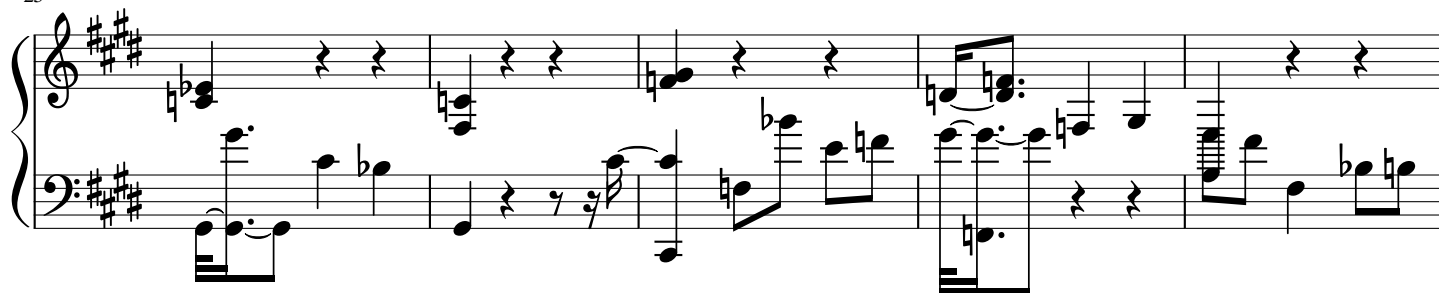
16

Measures 16-20. The right hand continues with a melodic line, including a triplet in measure 17. The bass line has a more active role with many moving lines.

21

Measures 21-24. The right hand has a melodic line with some rests. The bass line continues with moving lines and chords.

25



30



35



38



41

