

OUVRAGE PROTÉGÉ  
PHOTOCOPIE  
INTERDITE  
MÊME PARTIELLE  
(Loi du 11 mars 1957)  
constituerait CONTREFAÇON  
(Code Pénal Art. 425)

# pour la paix

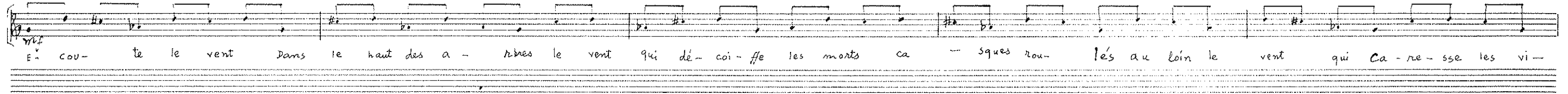
choeur mixte (8 voix) a cappella. (Deux sopr., deux altos, deux ténors, deux basses) I. Xenakis 1981

SANS VIBRATO

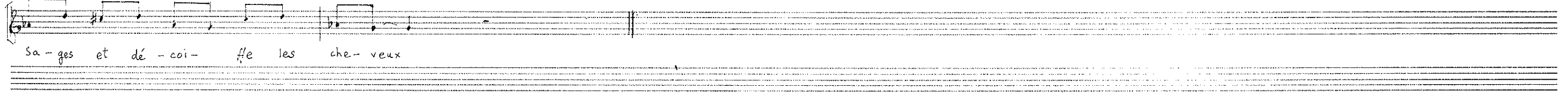
séq. 1

♩ = 92 MM

S+A



S+A



séq. 2

♩ = 72 MM

S



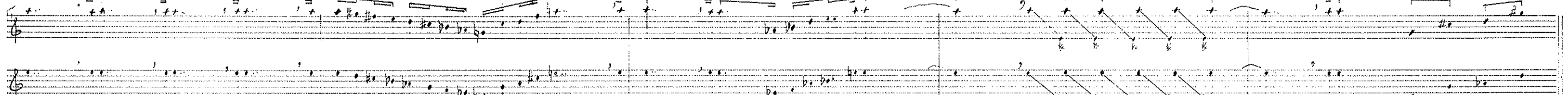
A



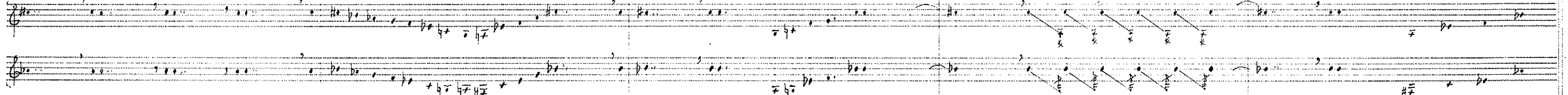
séq. 3

♩ = 92 MM

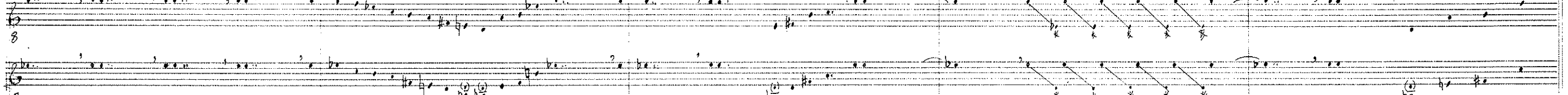
S



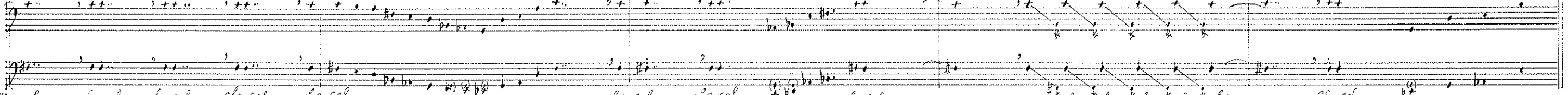
A



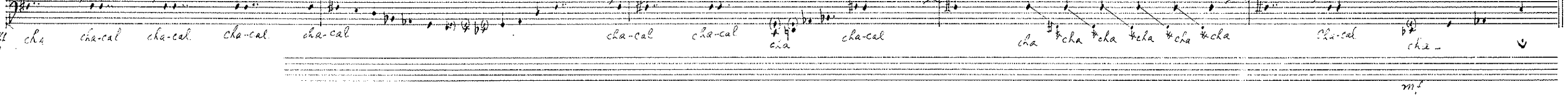
T



B



Tutti



♩ = 92 MH

Handwritten musical score for Soprano (S), Alto (A), Tenor (T), and Bass (B). The score includes vocal lines with lyrics and piano accompaniment. The lyrics are: "A - ou É". The score features various musical notations including notes, rests, and dynamic markings such as *pp* and *mp*. There are also handwritten annotations like "A - ou" and "ou (ou) → A → É".

→ = transformation continue d'un phonème à l'autre par la modification continue de la cavité buccale.

Handwritten musical score for Soprano (S), Alto (A), Tenor (T), and Bass (B). The score includes vocal lines with lyrics and piano accompaniment. The lyrics are: "ou A-É A-ou A → ou A". The score features various musical notations including notes, rests, and dynamic markings such as *pp* and *mp*. There are also handwritten annotations like "ou-A", "A-ou", "ou-A", "O-A", "A", "O → ou-A", "É", and "LONG".



Handwritten musical score for Soprano (S), Alto (A), and Tutti (Tutti: mf). The score is in 4/4 time, marked  $\text{♩} = 92 \text{ MM}$ . The lyrics are: "A ou O É A O". The score includes various musical notations such as notes, rests, and dynamic markings.

Handwritten musical score for a string quartet, titled "L'Espresso" by Luigi Dall'Abate. The score is written for Violin I, Violin II, Viola, and Cello/Double Bass. The tempo is marked "Allegro" and the time signature is 3/4. The score includes a piano introduction and features complex rhythmic patterns, including triplets and sixteenth notes. Dynamic markings such as "p" (piano) and "f" (forte) are present. The piece concludes with a "Tutti" marking and a key signature change to D major.

Tutti: *##*

le "H" est très fort du fond de la gorge modulation continue du souffle "H" en aspirant puis en expirant alternativement

se acc

(f) A → ou O → A

soffle: "H" "H" "H" "H" "H" "H" "H"



1. *q. 7*  
S  
A  
*mf* é-roui e-coute le vent dans le haut des nuées le vent qui dé-coiffe les monts Cas-ques rou-les au

S  
A

l e v e n t q u i c a - r e s - s e l e s x i - s a - g e s e t d i - c o i f - f e l e s c i - v i u x

Handwritten musical score for two staves, labeled 1S and 2A. The score includes notes, rests, and dynamic markings such as 'MOU', 'AO', 'A O', 'P', 'mf', and 'Long'.

Handwritten musical score for a piece in 9/8 time, marked  $\text{♩} = 72 \text{ MM}$ . The score is written on three staves: **T<sub>2</sub>** (Tenor 2), **B** (Bass), and **Ch.** (Chorus). The **T<sub>2</sub>** staff contains a single note in the first measure. The **B** staff contains a series of notes and rests, with some notes marked with a  $\text{tr}$  (trill) and a  $\text{gr}$  (grace note). The **Ch.** staff contains a series of notes and rests, with some notes marked with a  $\text{tr}$  and a  $\text{gr}$ . The score is divided into measures by vertical bar lines.

Handwritten musical score for "The Rose Tree". The score is written on four staves. The first three staves are for vocal parts labeled 1, 2, and B. The fourth staff is for piano accompaniment. The lyrics "KO - OUV-A" are written below the vocal staves. The title "The Rose Tree" is written at the bottom of the page.

Handwritten musical score for Soprano (S), Alto (A), Tenor (T), and Bass (B) voices. The score consists of 12 measures. The lyrics are: Ko - ou - A, Ko - ou - A, Ko - ou - A, Ko - ou - A, Ko - ou - A, Ko - ou - A, Ko - ou - A, Ko - ou - A, Ko - ou - A, Ko - ou - A, Ko - ou - A, Ko - ou - A. The notation includes various musical symbols such as notes, rests, and dynamic markings.

Handwritten musical score for Soprano (S), Alto (A), Tenor (T), and Bass (B) voices. The score consists of 12 measures. The lyrics are: Ko - ou - A, Ko - ou - A, Ko - ou - A, Ko - ou - A, Ko - ou - A, Ko - ou - A, Ko - ou - A, Ko - ou - A, Ko - ou - A, Ko - ou - A, Ko - ou - A, Ko - ou - A. The notation includes various musical symbols such as notes, rests, and dynamic markings. Above the score, there is a handwritten instruction: *→ Ralenti →*. To the right of the score, there is a handwritten note: *[les n = longs]*.

♩ = 46 MM

10

S

A

T

B

mf

S

A

T

B

PLEU RE PLEU RE RONT PLEU RE RONT  
PLEU RE RONT PLEU RE RONT LES MORTS  
A O É O A A O A OU A É O O OU OU É A O OU A O É I OU O OU I É A O OUA É A O OUA É O A É O I O OU A É

LES MORTS PLEU RE RONT LES MORTS PLEU RE RONT  
PLEU RE RONT LES MORTS PLEU - RE RONT PLEURE RONT PLEU  
O I A É O A O A É I O U I O É A I A É A O OUA É I A O U O É I O U O A A É O O U I É O A I O OUA É A