

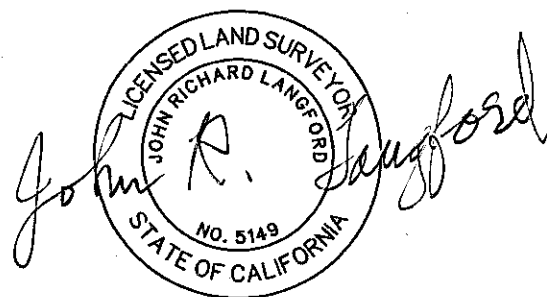
RECORD OF SURVEY NO. 31-72

BEING A SURVEY OF PARCELS 2 THRU 4, LOT LINE ADJUSTMENT 03-03, DOCUMENT NO. 2003006440
BEING LOCATED IN A PORTION OF
THE NE 1/4 OF SECTION 1, TOWNSHIP 8 NORTH, RANGE 22 EAST, MOUNT DIABLO MERIDIAN
COUNTY OF MONO, STATE OF CALIFORNIA

SURVEYOR'S STATEMENT

THIS MAP CORRECTLY REPRESENTS A SURVEY
MADE BY ME OR UNDER MY DIRECTION IN
CONFORMANCE WITH THE REQUIREMENTS OF
THE PROFESSIONAL LAND SURVEYOR'S ACT AT THE
REQUEST OF LOIS SEAL IN AUGUST, 2021.

JOHN R. LANGFORD
P.L.S. 5149
EXPIRATION DATE: 6/30/23



EXPIRATION DATE: 6/30/2023
01/19/2022

PURPOSE OF SURVEY:

THE REASON FOR THIS RECORD OF SURVEY MAP IS AS SET FORTH IN SECTION 8762 (B)(5) OF THE PROFESSIONAL LAND SURVEYOR'S ACT; THE POINTS OR LINES SET DURING THE PERFORMANCE OF THE FIELD SURVEY OF THE PROPERTY BOUNDARIES ARE NOT SHOWN ON ANY SUBDIVISION MAP, OFFICIAL MAP, OR RECORD OF SURVEY.

RECORDER'S STATEMENT

FILED THIS 22 DAY OF February, 2022,
AT 3:48 P.M. IN BOOK 5 OF RECORD OF SURVEYS
AT PAGE 76-76b, AT THE REQUEST OF LOIS SEAL.

MONO COUNTY RECORDER

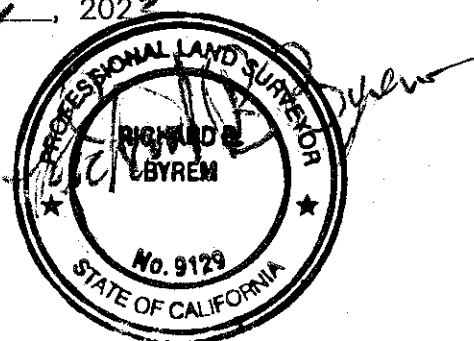
BY: DPV, Deputy Clerk-Recorder
SCHEEREN DEDMAN
MONO COUNTY RECORDER

DOCUMENT NO: 2022000802
FEE: \$ 87.00

COUNTY SURVEYOR'S STATEMENT

THIS MAP HAS BEEN EXAMINED IN ACCORDANCE
WITH SECTION 8766 OF THE PROFESSIONAL LAND SURVEYOR'S
ACT THIS 4th DAY OF February, 2022

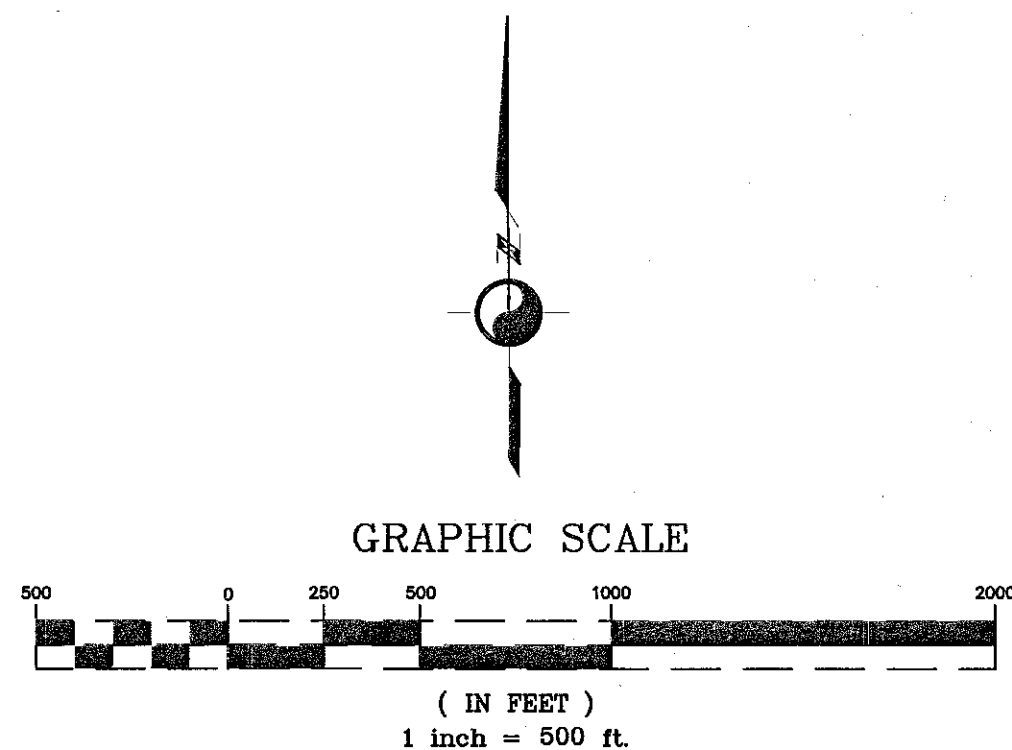
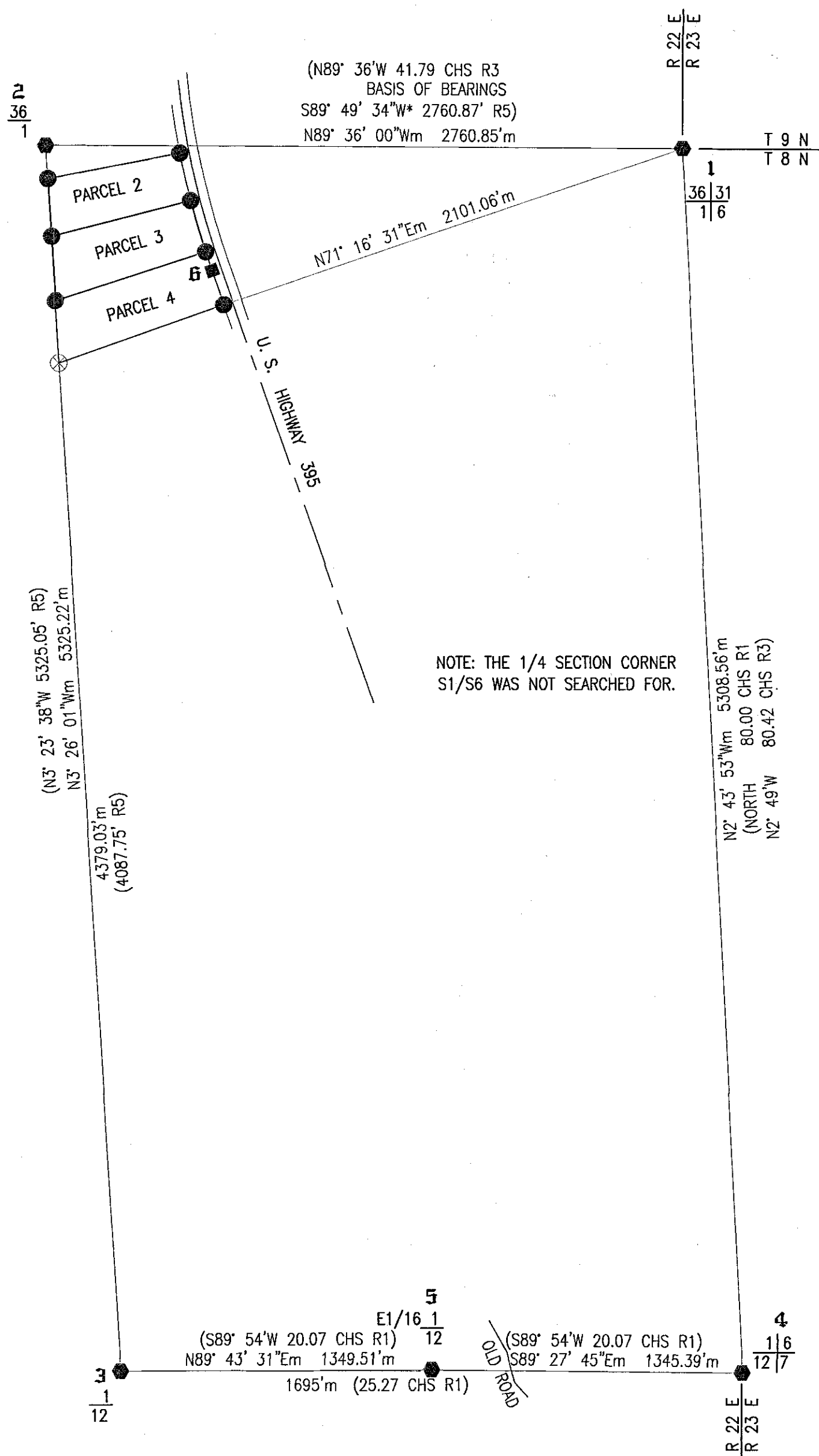
RICHARD B. BYREM P.L.S. 9129
MONO COUNTY SURVEYOR



SEE SHEET 2 OF 2 FOR LINE AND CURVE TABLES,
HISTORY OF SURVEYS, LEGEND, CORNER
DESCRIPTIONS AND EASEMENT REFERENCES.

BASIS OF BEARINGS: N 89°36' W, THE SOUTHERLY LINE OF THE SE 1/4 OF SECTION 36, TOWNSHIP 9 NORTH, RANGE 22 EAST, MOUNT DIABLO MERIDIAN.

RECORD BEARINGS WITH AN ASTERISK (*) ARE GRID. BASIS
OF BEARINGS AZIMUTH= GRID AZIMUTH + 0° 34' 26"



LEGEND

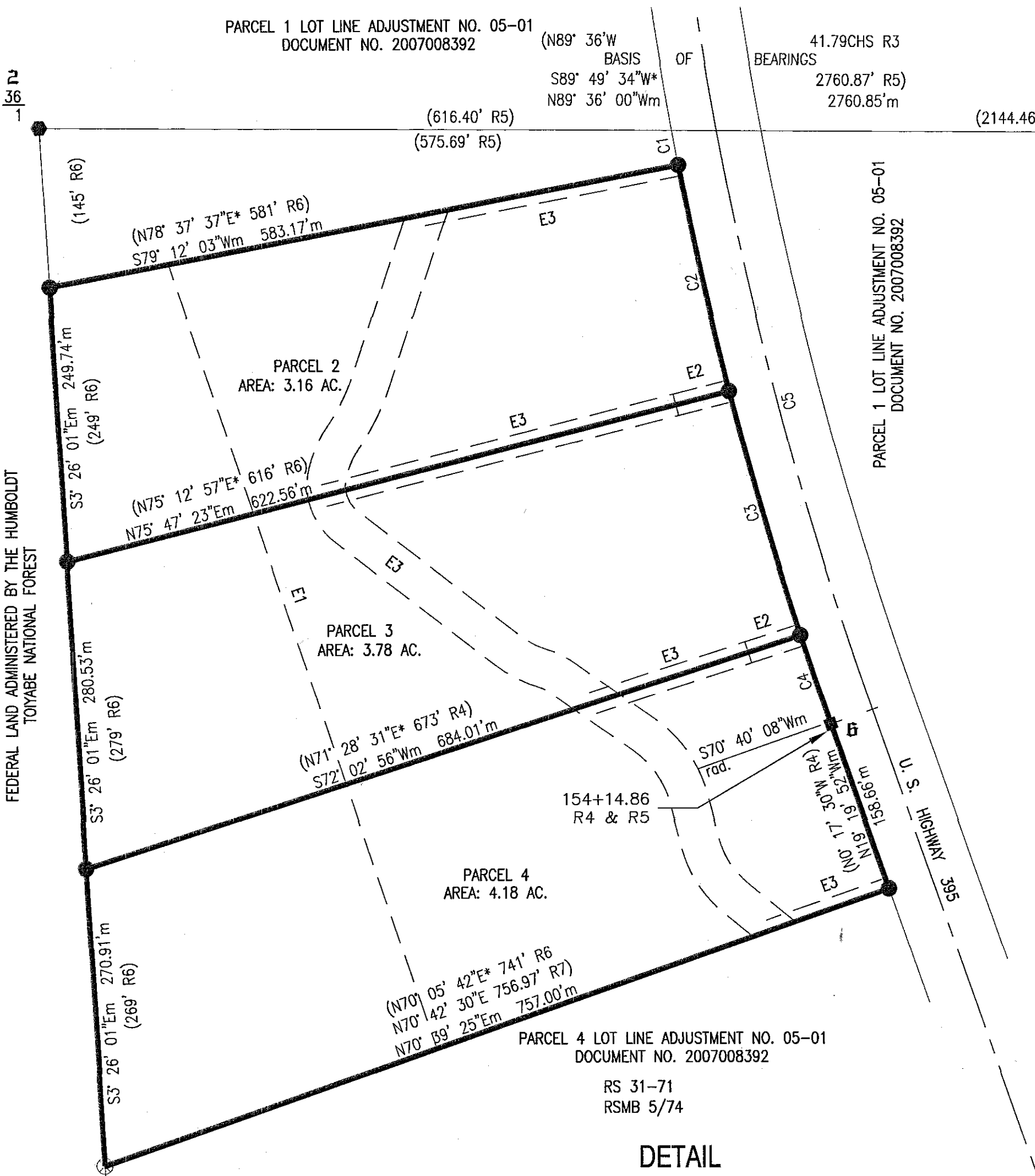
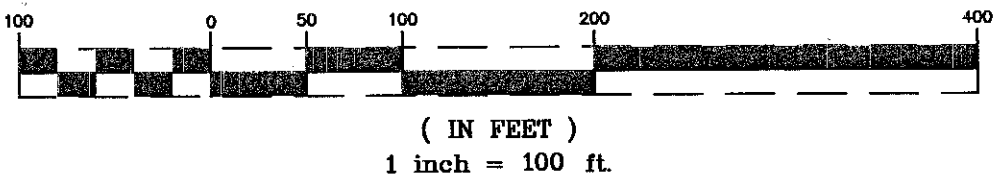
- Found a USGLO Brass Cap as described in the CORNER DESCRIPTIONS.
- Found a 2"Ø brass cap in a 2" inner diameter iron pipe inscribed Calif Div of Hwys and stationed as noted hereon.
- Found a 1-1/2"Ø yellow plastic cap inscribed KLEINE flush with ground.
PLS 8667
- Set a 1-1/2"Ø aluminum cap inscribed LS5149 on a 5/8"Øx24" rebar.
- m Based on field measurements.
- (R*) Based on record information per HISTORY OF SURVEYS hereon.

RECORD OF SURVEY NO. 31-72

BEING A SURVEY OF PARCELS 2 THRU 4, LOT LINE ADJUSTMENT 03-03, DOCUMENT NO. 2003006440
BEING LOCATED IN A PORTION OF
THE NE 1/4 OF SECTION 1, TOWNSHIP 8 NORTH, RANGE 22 EAST, MOUNT DIABLO MERIDIAN
COUNTY OF MONO, STATE OF CALIFORNIA



GRAPHIC SCALE



Curve Table						
Curve #	Delta m	Radius m	Length m	Delta (R)	Radius (R)	Length (R)
C1	0°31'05"	3540'	32.01'	-	-	-
C2	3°24'40"	3540'	210.76'	3°24'40" (R6)	3540' (R6)	210.75' (R6)
C3	3°44'26"	3540'	231.12'	3°44'26" (R6)	3540' (R6)	231.11' (R6)
C4	1°22'48"	3540'	85.26'	1°22'49" (R6)	3540' (R6)	85.28' (R6)
C5	8°55'35"	3500'	545.28'	-	-	-

Line Table				
Line #	Direction m	Length m	Direction (R)	Length (R)
L1	N89° 36' 00"W	40.71'	-	40.72' (R5)
L2	N70° 40' 08"E	40.00'	-	40.00' (R4)

HISTORY OF SURVEYS

- R1: 1874 USGLO Survey plat and notes of Township 8 North, Range 22 East, Mount Diablo Meridian approved at the Surveyor General's Office, San Francisco, California on December 2, 1874.
- R2: 1941 USGLO Dependent Resurvey plat and notes of Township 8 North, Range 23 East, Mount Diablo Meridian accepted at the General Land Office, Washington D.C. on October 5, 1945.
- R3: 1941 USGLO Dependent Resurvey plat and notes of Township 9 North, Range 22 East, Mount Diablo Meridian accepted at the General Land Office, Washington D.C. on October 2, 1947.
- R4: Caltrans Right-of-Way Record Map IX-MNO-23-L, Sheet 3 of 8 dated 8-59.
- R5: Caltrans Right-of-Way Appraisal Map 09-MNO-395-112.0/112.8, Sheet 2 of 5 revised Feb 9, 1976.
- R6: Lot Line Adjustment No. 93-0603-03 & Certificate of Compliance recorded as Document No. 2003006440 on 06/19/2003.
- R7: Record of Survey No. 31-71 filed on June 10, 2021 in Book 5 of Record of Surveys at Page 74.

EASEMENT REFERENCES

- E1: Telephone line right-of-way recorded on Feb 23, 1949 in Volume 25, Pages 425 thru 426.
- E2: Driveway and Utility Easement recorded on May 27, 2004 as Document #2004004858.
- R3: Irrigation Ditch Easement recorded on May 27, 2004 as Document #2004004859.

CORNER DESCRIPTIONS

- 1 Found a 3-1/4" USGLO brass cap inscribed T9N
R22E R23E
S36 S31
S1 S6
T8N
1941
UP 0.5' Accepted as the section corner per R1.
- 2 Found a 2-1/2" USGLO brass cap inscribed S36
S1
1941
up 0.7' in a 2.5" rock mound. Accepted as the 1/4 section corner per R1.
- 3 Found a 1-1/2" yellow plastic cap inscribed KLEINE on a 5/8" rebar up 0.3'
PLS8667
in a 3" rock mound on the easterly side of a 16"x22"x8" stone (30"x20"x8" per R1).
Accepted as 1/4 section corner per R1 and R7.
- 4 Found a 2-1/2" USGLO brass cap inscribed T8N
R22E R23E
S1 S6
S12 S7
1941
up 0.5' Accepted as the section corner per R2.
- 5 Found an old 2" iron pipe up 1.0' inscribed CS. No ref. Pipe substantially conforms to location of 1/16 section corner. Accepted as a careful and faithful establishment of the E1/16 corner S1/S12.
- 6 Found a 2" brass cap inscribed CA DIV HWYS
154+15.19
40.00 LT
Accepted as R/W monument. Aluminum cap inscribed with my LS number LS5149 noted per R7 was removed.