

# RECORD OF SURVEY NO. 34-17

BEING A SURVEY OF THE NORTH HALF OF LOTS 1 & 2 OF THE S.W. 1/4 OF SECTION 31, TOWNSHIP 1 NORTH, RANGE 27 EAST, MOUNT DIABLO BASELINE & MERIDIAN, MONO COUNTY, CALIFORNIA.

This map correctly represents a survey made by me or under my direction in conformance with the requirements of the Land Surveyor's Act at the request of Greg Simpson in July, 1983.

This map has been examined for conformance with the Land Surveyor's Act this 22ND day of SEPTEMBER, 1983.

Filed this 22 day of Sept, 1983, at 2:25 PM in Book 1 of Record of Surveys at Page 96 at the request of Greg Simpson. Instrument No. 2333 Fee: \$5.00

Richard J. Melim  
County Surveyor

By: Renald B. Brennan  
Deputy County Surveyor

Renn Nolan  
Mono County Recorder

By: John M. Roberts  
Deputy County Recorder

Daniel A. Hawley  
L.S. 4587

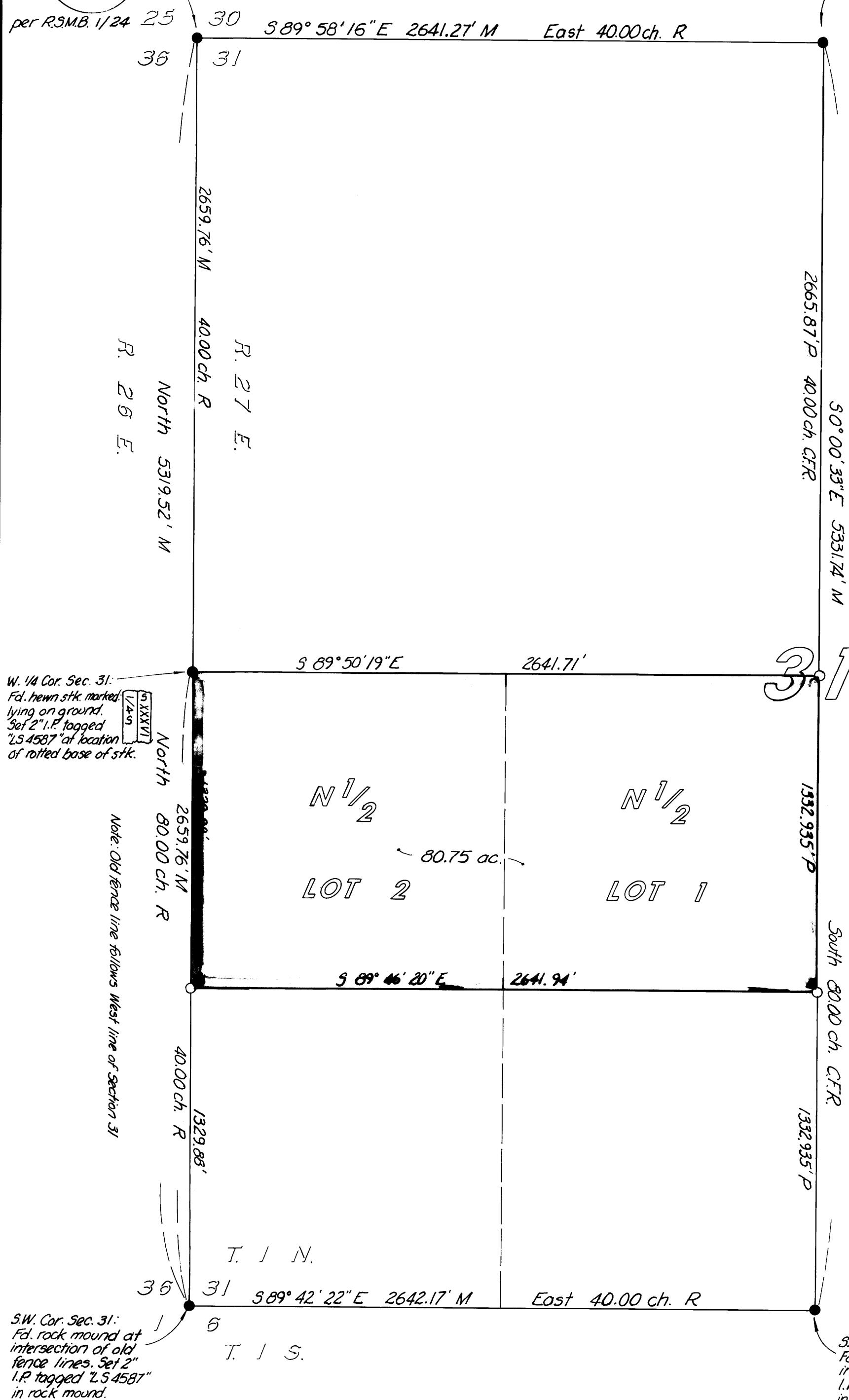
## Legend

- Found monument as noted
  - Set 2" iron pipe tagged "LS 4587"
  - M Measured
  - P Proportioned measurement from record information
  - R Record information from BLM field notes #103-2 dated May 30, 1855 and Aug. 13, 1856, by A.W. Von Schmidt.
  - C.F.R. Calculated from the above record information
- Note: All found monuments are per the above field notes unless otherwise noted.

N.W. Cor. Sec. 31:  
Fol. 2" pipe & cap stamped:

T 1 N.  
R 26 E.  
S 36 1/5 D.W. & P

N. 1/4 Cor. Sec. 31:  
Fol. hewn stk. marked:  
lying near rock mound.  
Set 2" I.P. tagged "LS 4587"  
in rock mound.



The Basis of Bearings for this survey is North for the west line of Sec. 31, T. 1 N., R. 27 E., M.D.B. & M. per BLM field notes #103-2.

Scale: 1" = 400'

Note: The East half of Section 31 is unsurveyed - the East 1/4 Corner and the Northeast Section Corner of Section 31 were never set due to the rugged terrain encountered. See BLM field notes #103-2. In the event that the BLM were to complete the survey of Section 31, their placement of the East 1/4 Corner could affect the position of the Center of Section and the South 1/4 Corner on the Quarter Section line (NE and SE corners of subject parcel).