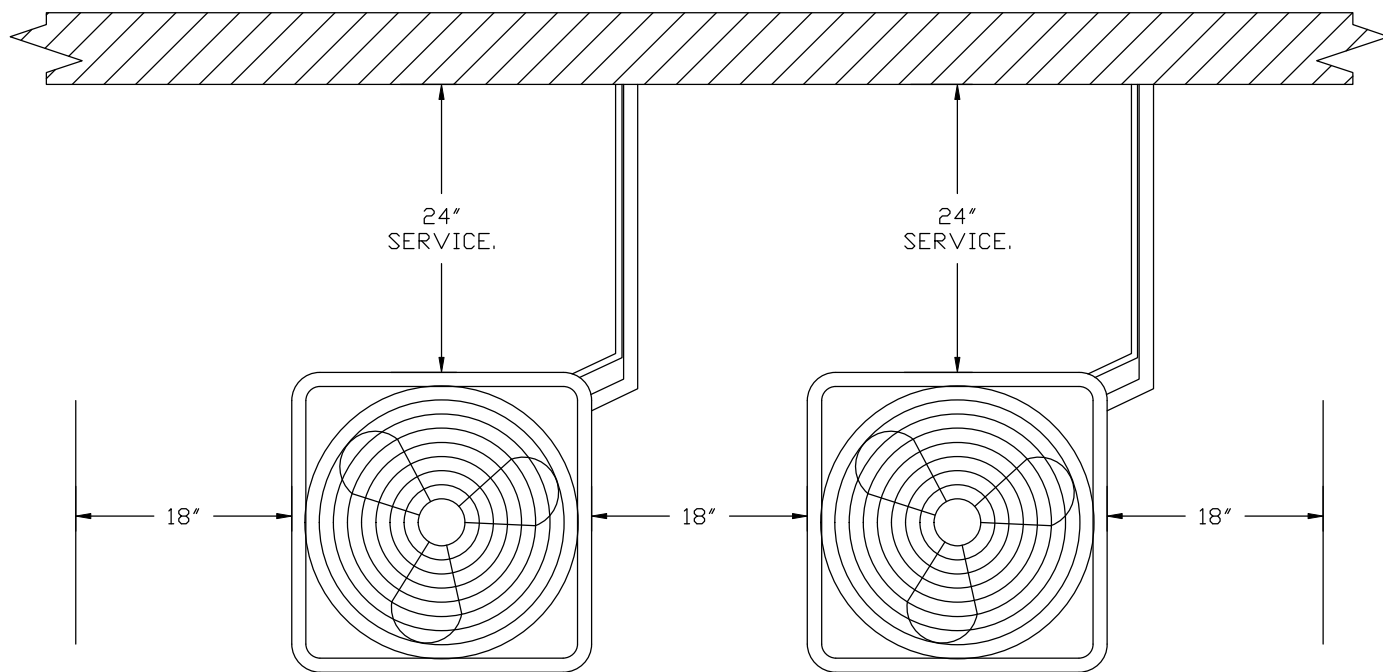
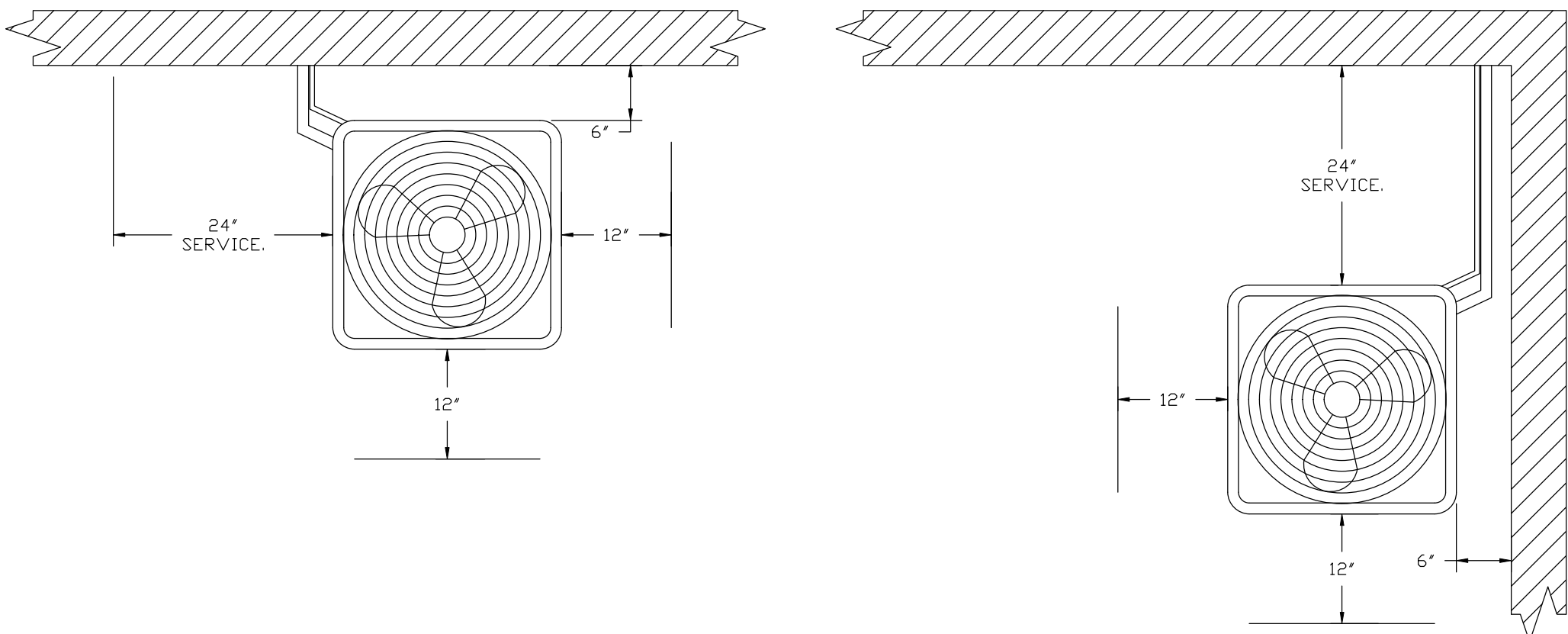


- FAN #3 A3-D500-24D-MPU - HEATER
1. DIRECT GAS FIRED HEATED MAKE UP AIR UNIT WITH 24" MIXED FLOW DIRECT DRIVE FAN AND 12" BURNER.
2. V-BANK EZ FILTERS - INDOOR.
3. SIDE DISCHARGE - AIR FLOW RIGHT -> LEFT.
4. GAS PRESSURE GAUGE, 0-35", 2.5" DIAMETER, 1/4" THREAD SIZE.
5. GAS PRESSURE GAUGE, -5 TO +15 INCHES WC, 2.5" DIAMETER, 1/4" THREAD SIZE.
6. GASLINK BUILDING MONITORING SYSTEM COMMUNICATIONS MODULE. REQUIRES INTERNET & FIELD WIRED ETHERNET CONNECTION OR 3G CELLULAR SERVICE. INCLUDES REV 3 COM MODULE, RJ45 TO MODBUS CONVERTER, 3 FT CAT5 CABLE, AND 1 FT OF SHIELDED TWISTED PAIR.
7. MOTORIZED BACK DRAFT DAMPER 30" X 30" FOR SIZE 3 STANDARD & MODULAR HEATER UNITS W/EXTENDED SHAFT, STANDARD GALVANIZED CONSTRUCTION, 3/4" REAR FLANGE, LOW LEAKAGE, NFBUP-S ACTUATOR INCLUDED.
8. TOTAL CFM MONITORING FOR MUA UNITS. USES +/- 15 PRESSURE TRANSDUCER, RIVET NUTS, 1/4" AIRFLOW TUBING AND PUSH TO CONNECT FITTINGS.
9. INSULATION FOR V-BANK INTAKE OPTION.
10. 10 TON, DUAL CIRCUIT (S/S) MODULAR PACKAGED COOLING OPTION FOR SIZE 3 DF/EH MODULAR PACKAGED UNIT. INCLUDES CONDENSER, DX COIL, FILTER/DRYER KIT, THERMAL EXPANSION VALVE, R410A REFRIGERANT, AND REFRIGERANT PIPING. (3,600 TO 6,000 CFM) WHEN ORDERED WITH OPPOSITE AIRFLOW CONDENSERS ACCESS AND COIL PIPING WILL REMAIN IN STANDARD POSITION. DRAIN AND SLEDS WILL MOVE TO THE OPPOSITE SIDE. ANY OTHER CHANGE WILL REQUIRE CLI. CONDENSERS REQUIRE SEPARATE 208V, 3 PHASE POWER SUPPLY UNLESS ORDERED WITH SINGLE POINT CONNECTION. COIL = 3E20602M.
11. SHIP CONDENSERS LOOSE. THE REFRIGERATION LINES WILL NEED TO BE STUBBED OUT 12 INCHES. THE SUCTION LINES NEEDS TO BE INSULATED INSIDE THE COIL MODULE. ROTARY DISCONNECT SHOULD NOT BE INSTALLED ON THE POST, BLANK POST SHOULD BE USED IN PLACE.
12. FREEZE/STAT FACTORY SET AT 35°F AND 10 MINUTES.
13. INDOOR HANGING CRADLE FOR THE SIZE 3 DIRECT FIRED UNIT. 2 HSA200 HANGING ISOLATORS PER UNI-STRUT INCLUDED.
14. UNIT MOUNTED VFD FOR USE WITH ECM03.
15. HINGED DOUBLE WALL INSULATED DOOR ASSEMBLY (BURNER/BLOWER/MPU SECTION).
16. 2 YEAR PARTS WARRANTY.

*NOTE: SUPPLY DUCT MUST BE INSTALLED TO MEET SMACNA STANDARDS. A MINIMUM STRAIGHT DUCT LENGTH MUST BE MAINTAINED DOWNSTREAM OF UNIT DISCHARGE AS OUTLINED IN AMCA PUBLICATION 201. WHEN USING RECTANGULAR DUCTWORK, ELBOWS MUST BE RADIUS THROAT, RADIUS BACK WITH TURNING VANES. FLEXIBLE DUCTWORK AND SQUARE THROAT/SQUARE BACK ELBOWS SHOULD NOT BE USED. ANY TRANSITION AND/OR TURNS IN THE DUCTWORK WILL CAUSE SYSTEM EFFECT. SYSTEM EFFECT WILL DRAMATICALLY INCREASE STATIC PRESSURE AND REDUCE AIRFLOW. DO NOT RELY ON UNIT TO SUPPORT DUCT IN ANY WAY. FAILURE TO PROPERLY SIZE DUCTWORK MAY CAUSE SYSTEM EFFECTS AND REDUCE PERFORMANCE OF THE EQUIPMENT. SUGGESTED STRAIGHT DUCT SIZE IS 30" X 30".

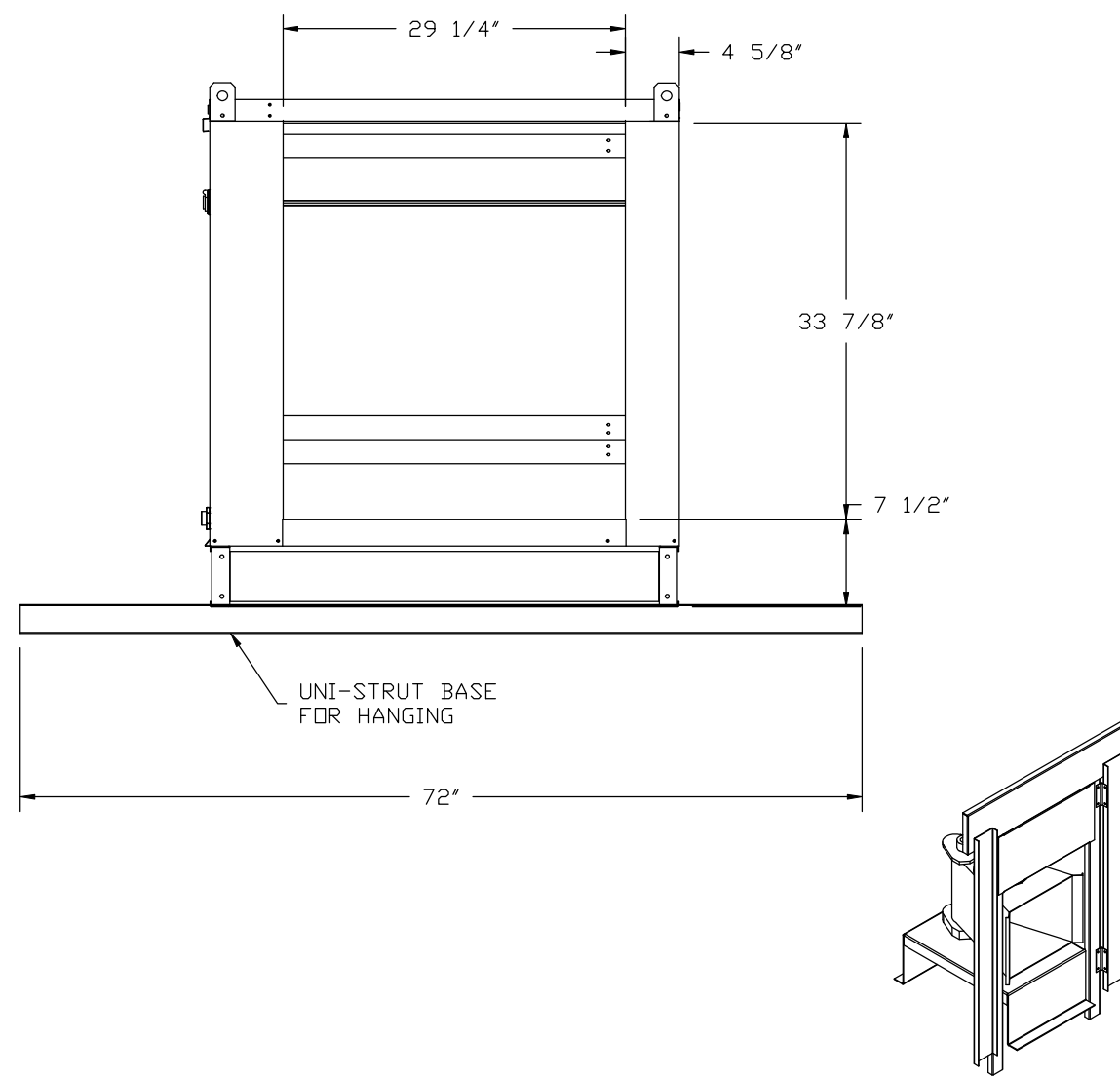
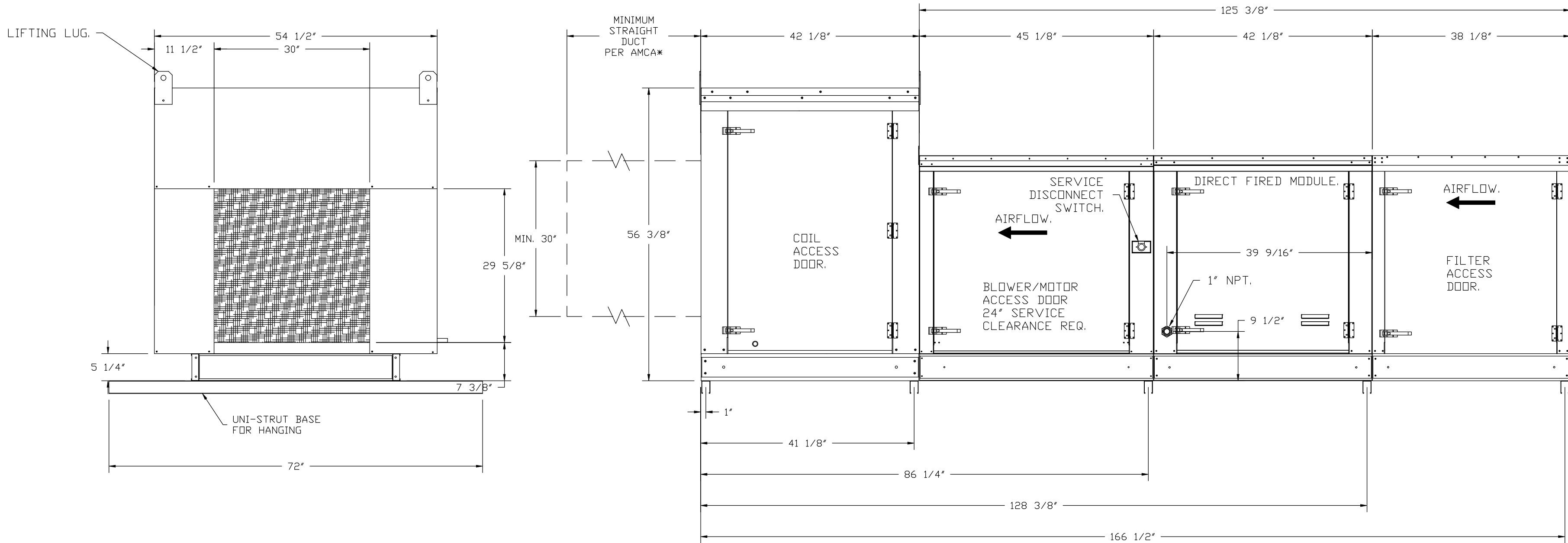
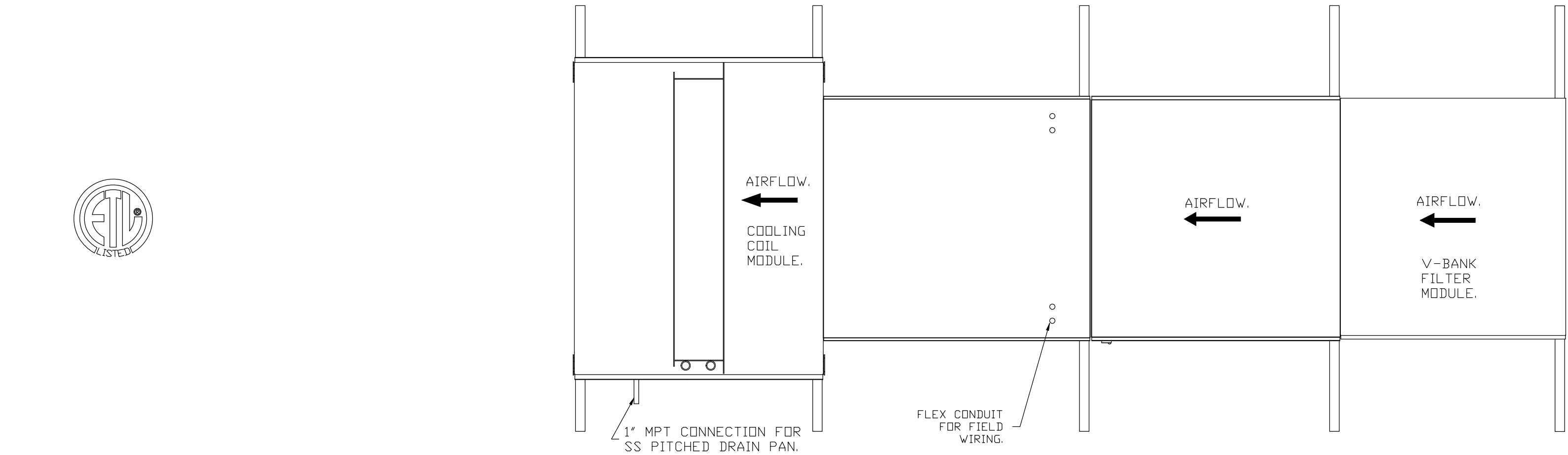
SUPPLY SIDE HEATER INFORMATION:

WINTER TEMPERATURE = 28°F. TEMP. RISE = 47°F.
BTUS CALCULATED OFF ACTUAL AIR DENSITY.
OUTPUT BTUS AT ALTITUDE OF 0.0 FT. = 257085.
INPUT BTUS AT ALTITUDE OF 0.0 FT. = 279441.
OUTPUT BTUS AT ALTITUDE OF 299 FT. = 254320.
INPUT BTUS AT ALTITUDE OF 299 FT. = 276434.

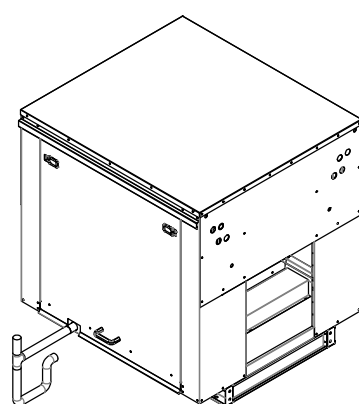


CONDENSER CLEARANCES

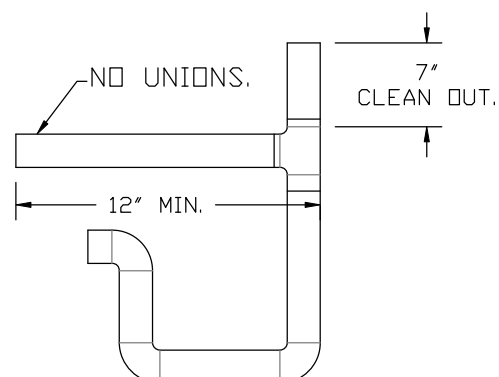
48" CLEARANCE REQUIRED ABOVE CONDENSERS.
(NOTE: **CONDENSERS SHOWN HERE ARE NOT DRAWN AT SCALE).



TYPICAL DRAIN TRAP INSTALL



RECOMMENDED COOLING COIL DRAIN TRAP CONFIGURATION.



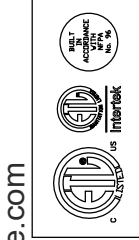
- NOTES:
1) 1" DIAMETER PVC PIPE ONLY.
2) USE ONLY LOW PROFILE COUPLINGS.
3) ADD CLEAN OUT AS SHOWN.

DIRECT FIRED (DF) PROFILE PLATE ASSEMBLY

DIRECT FIRED PROFILE PLATE SPECIFICATIONS:
DESCRIPTION:
DIRECT FIRED BURNERS SHALL HAVE PATENTED (US PATENT NO. US6629528B2), SELF-ADJUSTING PROFILE PLATES DESIGNED TO ENSURE PROPER AIR VELOCITY AND PRESSURE DROP ACROSS THE BURNER. PROFILE PLATES SHALL ALLOW BURNERS TO ACHIEVE CLEAN COMBUSTION BY LIMITING BY-PRODUCT LEVELS TO A MAXIMUM OF 20PPM OF CARBON MONOXIDE (CO), AND 20PPM OF NITROGEN DIOXIDE. UNDERBURNED FIRED UNITS SHALL BE CONFIGURED WITH THE BLOWER MOUNTED DOWNSTREAM OF THE BURNER. THIS ARRANGEMENT WILL ENSURE A CONSISTENT AIRFLOW, REGARDLESS OF INLET AIR TEMPERATURE.
APPLICATION:
SPRING-LOADED BURNER PROFILE PLATES ARE ENGINEERED TO AUTOMATICALLY REACT TO THE MOMENTUM OF A FRESH AIR STREAM, WITHOUT THE NEED FOR ANY MOTORS OR ACTUATORS TO MECHANICALLY ADJUST THEM. WITH THIS FEATURE, ALL DF UNITS ARE DESIGNED FOR DEMAND CONTROL VENTILATION (DCV) REQUIREMENTS.
CERTIFICATIONS:
ALL PROFILE PLATE ASSEMBLIES SHALL BE INCLUDED IN THE DF UNIT'S ETL LISTING AND COMPLY WITH COMBINED SAFETY STANDARDS ANSI Z83.4 AND CSA 3.7 (NON-RECIRCULATING DF HEATERS) AND ANSI Z83.8 (RECIRCULATING DF HEATERS).
GENERAL CONSTRUCTION:
-PROFILE PLATES SHALL BE FORMED FROM G90 GALVANIZED STEEL.
-PROFILE PLATES SHALL VARY IN SIZE PER UNIT.
-PROFILE PLATES SHALL BE MOUNTED ALONG THE SAME PLANE AS THE DISCHARGE OF THE BURNER.
-DESIGN SHALL INCORPORATE PROPERLY TORQUED, PERMANENTLY MOUNTED SPRING HINGES.
-SPRING HINGES SHALL BE MADE FROM PLATED STEEL.

REVISIONS	
DESCRIPTION	DATE:

CAPTIVE AIR



www.captiveaire.com
Southern California Office
3002 Dow Ave., Suite 410, Tustin, CA 92780 PHONE: (714) 957-1500 FAX: (919) 227-5975 EMAIL: reggie@captiveaire.com

Panda Express - Warner Robins AFB GA - rev4
WARNER ROBINS, GA, 31098

DATE: 5/28/2021
DWG.#: 4911608
DRAWN BY: AH-86
SCALE: 3/4" = 1'-0"
MASTER DRAWING

SHEET NO.



PANDA RESTAURANT GROUP INC.
1683 Walnut Grove Ave.
Rosemead, California
91770
Telephone: 626.799.9898
Facsimile: 626.372.8288

All ideas, designs, arrangement and plans indicated or represented by this drawing are the property of Panda Express Inc. and were created for use on this specific project. None of these ideas, designs, arrangements or plans may be used by or disclosed to any person, firm, or corporation without the written permission of Panda Express Inc.

REVISIONS:		
1	PLAN REVIEW COMMENTS	03/26/2021
3	PLAN REVIEW COMMENTS	06/01/2021

ISSUE DATE:		
1	95% SUBMITTAL	01/11/2021
2	100% SUBMITTAL	04/16/2021
3	100% RESUBMITTAL	05/14/2021
4	FINAL SUBMITTAL	06/08/2021

DRAWN BY: MRM

PANDA PROJECT #: D7395
ARCH PROJECT #:



MARSHALL & BOLLWERK
ENGINEERING, INC.
8881 Highway 92, Suite 400
Woodstock, Ga. 30189
p: (678) 795-0333, f: (678) 325-4559
e: mbe@mbeinc.net

PANDA EXPRESS

ROBINS AFB SHOPPING CENTER
ROBINS AFB, GA

M-403

BID SET - 2021/06/28