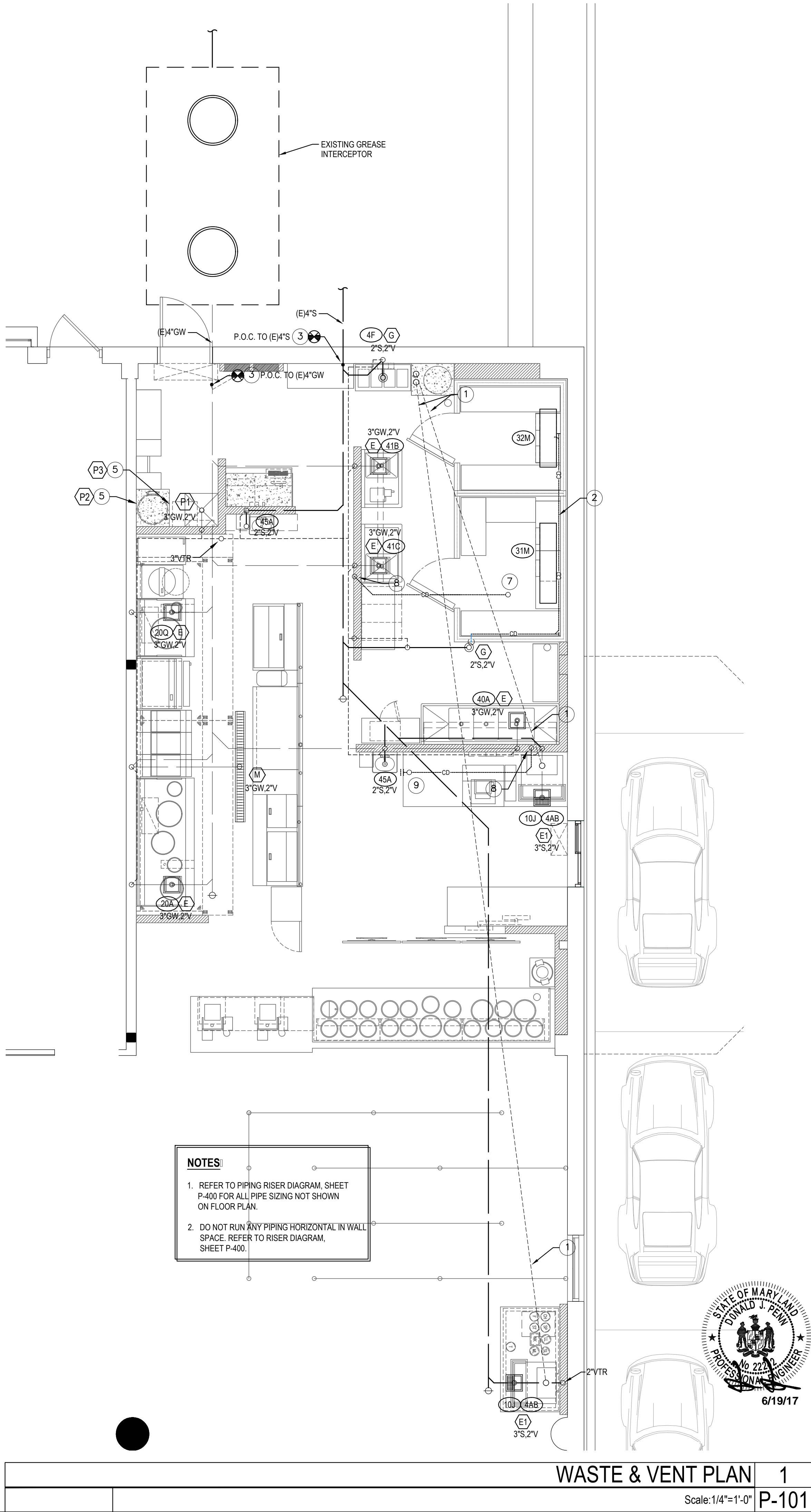


PLUMBING FIXTURE SCHEDULE				
<div>A</div>	NOT USED.			
<div>B</div>	NOT USED			
<div>C</div>	NOT USED			
<div>D</div>	FLOOR DRAIN: ZURN # ZB415-B5 CAST IRON DRAIN WITH 5" ROUND POLISHED BRONZE TOP, MEMBRANE FLASHING CLAMP, PROVIDE 2" OUTLET WITH P-TRAP, CLEAN AND POLISH AFTER INSTALLATION. REFER TO DETAIL 9/P-500 & 17/P-500, PROVIDE TRAP PRIMER			
<div>E</div>	FLOOR SINK: ZURN # Z1901-32, RECEPTOR WITH 12" SQUARE TOP x 8" DEEP CAST IRON BODY WITH ACID-RESISTING ENAMEL INTERIOR, RECEPTOR PROVIDED WITH ALUMINUM DOME STRAINER WITHOUT GRATE.			
<div>E1</div>	FLOOR SINK: ZURN # Z1901-2-32, RECEPTOR WITH 12" SQUARE TOP x 8" DEEP CAST IRON BODY WITH ACID-RESISTING ENAMEL INTERIOR, RECEPTOR PROVIDED WITH PORCELAIN ENAMEL LOOSE-SET 1/2 GRATE AND ALUMINUM DOME STRAINER.			
<div>F</div>	NOT USED			
<div>G</div>	FLOOR DRAIN WITH FUNNEL: ZURN # ZB415-AR-4 ACID RESISTING EPOXY COATED CAST IRON DRAIN WITH 5" ROUND POLISHED BRONZE TOP, 4" FUNNEL, PROVIDE 2" OUTLET WITH P-TRAP, CLEAN AND POLISH AFTER INSTALLATION, REFER TO DETAIL, PROVIDE TRAP PRIMER			
<div>H</div>	NOT USED			
<div>I</div>	GREASE INTERCEPTOR: JENSEN OR EQUAL, 1250 GALLONS, 4" INLET AND OUTLET, TRAFFIC COVER, REFER TO CIVIL DRAWINGS FOR LOCATION, THE DESIGN OF THE GREASE INTERCEPTOR SHALL BE APPROVED BY LOCAL CITY REQUIREMENT.			
<div>J</div>	WATER HAMMER ARRESTER: J. R. SMITH #5020, 1" NIPPLE OR EQUAL			
<div>K</div>	PROVIDE: ZURN 375ST STAINLESS STEEL REDUCED PRESSURE PRINCIPLE ASSEMBLY AT BAG-N-BOX. REFER TO 19/P-500			
<div>L</div>	HOSE BIBB: ACORN #8121 WITH VACUUM BREAKER, CHROME PLATED.			
<div>L1</div>	HOSE BIBB: WOODFORD MB65 FREEZELESS COMMCEALED BOX TYPE WALL HYDRANT IN SECURE LOCK STYLE MODULAR BOX, SINGLE CHECK ANTI SIPHON VACUUM BREAKER, CHROME HEAD, BRASS VALVE BODY HYDRANT WITH 3/4" HOSE CONNECTION 15" A.F.F.			
<div>M</div>	TRENCH DRAIN: ZURN #Z-886-RFS, 6" WIDE x 80" LONG, TRENCH DRAIN SYSTEM, MODULAR CHANNEL SECTIONS SHALL BE MADE OF HIGH DENSITY POLYETHYLENE WITH INTERLOCK ENDS, A RADUISED BOTTOM AND REINFORCED STAINLESS STEEL SLOTTED GRATE.			
<div>N</div>	PROVIDE WATTS SERIES CV CHECK VALVE AFTER EACH BV.			
<div>O</div>	FREEZE PROOF ROOF HYDRANT: WOOFORD MODEL: RHY2-MS			
<div>P1</div>	MOP SINK: GSW # SE2424FM 24"x24" STAINLESS STEEL UNIT WITH 13" HIGH SIDES, 18 GA. STAINLESS STEEL,CHICAGO FAUCET #897 WITH INTEGRAL STOPS IN SHANKS, WALL BRACE, HOSE THREADS, PAIL HOOK, VACUUM BREAKER, ROUGH BRASS FINISH, THREE FOOT RUBBER HOSE, 3" TRAPPED AND VENTED WASTE CONNECTION, PROVIDE 3/4" HW & CW RI 8" OC, 36" A.F.F, PROVIDE 3/4" CW HOSE BIBB, ACORN #8121 W/ VACUUM BREAKER, 48" A.F.F. FOR CHEMICAL CONNECTION.			
<div>P2</div>	GAS WATER HEATER MFG: A.O. SMITH MODEL: BTX-100, SERIES 130, (OR STATE MODEL SHE50 100NE FORCE 90 ) 50 GALLON, 100,000 BTU/HR GAS INPUT, FIRST HOUR DELIVERY 151 GALLONS 100 RISE, 116 GPH CONTINUOUS RECOVERY 100 RISE.			
<div>P3</div>	ELECTRICAL WATER HEATER MFG: A.O. SMITH MODEL DEL-10, 10 GALLON STORAGE, 6.0 KW, 208 VOLT, 1 PHASE, 30 GPH RECOVERY 80 RISE.			
<div>CP</div>	HW CIRC. PUMP - MFG: BELL & GOSSETT. MODEL: N8F-22U, 1/12 HP, 120 VOLT, 7.5 GPM @ 10' HEAD			
<div>RD</div>	RD - ROOF DRAIN: J.R. SMITH #1010 CAST IRON ROOF DRAINS WITH FLASHING COLLAR AND CAST IRON DOME, FURNISH EXTENSION (SUFFIX-E) FOR INSULATED ROOFS, SUMP RECEIVER (SUFFIX-R) AND UNDERDECK CLAMP (SUFFIX-C) FOR ALL BUT POURED-IN-PLACE INSTALLATIONS, OUTLET CONNECTION TYPE SHALL BE COMPATIBLE WITH PIPING SYSTEM.			
<div>OD</div>	OD - OVERFLOW ROOF DRAIN: J.R. SMITH #1070 WITH SAME FEATURES AS DESCRIBED FOR "ROOF DRAINS". TANDPIPES SHALL BE ADJUSTED AND SECURED SO THAT AFTER THE INSTALLATION OF THE DRAIN ASSEMBLY, THE TOP OF THE STANDPIPE SHALL BE (2") ABOVE THE ADJACENT ROOF SURFACE.			
FIXTURE BRANCH SCHEDULE				
FIXTURE	COLD WATER	HOT WATER	WASTE	VENT
WATER CLOSET (HANDICAPPED)	3/4"	--	4"	2"
LAVATORY	1/2"	1/2"	2"	1 1/2"
2 AND 3 - COMP SINK	3/4"	3/4"	3"	2"
HAND SINK	1/2"	1/2"	2"	1 1/2"
MOP SINK (J.S.)	3/4"	3/4"	3"	2"
EQUIPMENT	3/4"	--	--	--

KITCHEN EQUIPMENT SCHEDULE		
ITEMS IN THIS SCHEDULE ARE FURNISHED BY THE OWNER AND INSTALLED BY THE GENERAL CONTRACTOR AND CONNECTED TO THE PLUMBING UTILITIES BY THE PLUMBING CONTRACTOR, WHO SHALL INSTALL ALL PLUMBING DEVICES FURNISHED WITH EQUIPMENT.		
WASTE: FS = FLOOR SINK, CFD = CONDENSATE FLOOR DRAIN, VB = VACUUM BREAKER, FLEX = A SIX FOOT COILED LENGTH OF FOOD QUALITY FLEXIBLE REINFORCED PLASTIC TUBING CONNECTED FROM THE ROUGH IN TO THE EQUIPMENT WITH ALL REQUIRED ADAPTERS AND HOSE CLAMPS.		
ALL PIPES MUST MAINTAIN A MINIMUM CLEARANCE OF 6" AFF AND MUST BE WELL SUPPORTED, NO FLOOR SUPPORTS ALLOWED.		
4A	SERVING COUNTER MOUNTED SODA MACHINE: IF PROVIDED, SODA MACHINE INSTALLER TO PROVIDE DRAIN LINES FROM ICE BIN AND SODA MACHINE TO FS WITH 1" AIR GAP, DRAIN LINE TO BE INSULATED, WATER TO SODA MACHINE TO BE PROVIDED THROUGH BUNDLE FROM FILTER AND RACK IN KITCHEN BY SODA MACHINE INSTALLER.	
4AB	BEVERAGE COUNTER MOUNTED SODA MACHINE WITH ICE MACHINE: PROVIDE 3/4" COPPER PIPE IW FROM COUNTER TROUGH DRAIN TO FS WITH 1" AIR GAP, INSULATE, WATER TO SODA MACHINE TO BE PROVIDED THROUGH BUNDLE FROM FILTER AND RACK IN KITCHEN BY SODA MACHINE INSTALLER.	
4F	WATER FILTER: PROVIDE 3/4" CW AT 96" AFF WITH BV, PROVIDE FLEX AND REDUCED PRESSURE STAINLESS STEEL BACKFLOW PREVENTOR, OR OTHER DEVICE AS REQUIRED BY LOCAL CODE, INSTALL OWNER PROVIDED WATER FILTER AND MAKE CONNECTIONS TO BACKFLOW PREVENTOR AND WATER SUPPLY, PROVIDE ALL REQUIRED FITTINGS TO ALLOW SODA MACHINE INSTALLER TO HOOK UP BOOSTER PUMP TO WATER FILTER.	
9D	ICE TEA MAKER: PROVIDE 3/4" CW @ 24" A.F.F, PROVIDE ALL REQUIRED FITTINGS TO ALLOW ICE TEA INSTALLER TO HOOK UP ONE BV, OTHER BV FOR OTHER EQUIPMENT.	
10J	SODA MACHINE MOUNTED ICE MACHINE: PROVIDE 1/2" CW AT 24" A.F.F. WITH BV, PROVIDE ALL REQUIRED FITTINGS TO ALLOW ICE MACHINE INSTALLER TO HOOK UP ICE MACHINE TO CW.	
20A	CHINESE RANGE: PROVIDE 3/4" CW AT 10" AFF WITH BV, PROVIDE PRESSURE TYPE VB OR OTHER BACKFLOW DEVICE AS REQUIRED BY LOCAL CODE, AND CONNECT TO OWNER SUPPLIED FAUCETS, PROVIDE 2" COPPER PIPE IW TO FS WITH 2" AIR GAP.	
20B	PROVIDE 1/2" GAS SUPPLY AT 8" AFF WITH EASILY ACCESSIBLE SHUT-OFF VALVE, INSTALL OWNER SUPPLIED GAS REGULATOR AND ADJUST GAS LEVEL TO BURNERS.	
20Q	CHINESE RANGE: PROVIDE 3/4" CW AT 10" AFF WITH BV, PROVIDE PRESSURE TYPE VB OR OTHER BACKFLOW DEVICE AS REQUIRED BY LOCAL CODE, AND CONNECT TO OWNER SUPPLIED FAUCETS, PROVIDE 2" COPPER PIPE IW TO FS WITH 2" AIR GAP, PROVIDE 1" GAS SUPPLY DOWN TO 9" AFF REDUCE TO 3/4" AT EQUIPMENT CONNECTION WITH EASILY ACCESSIBLE SHUT-OFF VALVE, INSTALL OWNER SUPPLIED GAS REGULATOR AND ADJUST GAS LEVEL TO BURNERS.	
21G	FRYER: PROVIDE 1-1/2" GAS SUPPLY DOWN TO 14" AFF THEN TRANSITION TO 1" WITH 90 ANGLE AND SHUT OFF VALVE, PROVIDE ALL REQUIRED FITTINGS AND INSTALL OWNER SUPPLIED QUICK DISCONNECT FLEXIBLE PIPE AND CONNECT TO UNITS WITH 90 ANGLE, SEE DETAIL ON P-500	
25A	RICE COOKER: PROVIDE 3/4" GAS SUPPLY AT 30" AND 3/4" GAS SUPPLY AT 10" AFF WITH SHUT OFF VALVES, ONE FOR EACH UNIT, PROVIDE ALL REQUIRED FITTINGS AND INSTALL OWNER SUPPLIED QUICK DISCONNECT FLEXIBLE PIPE AND CONNECT TO UNITS.	
31M	WALK-IN COOLER: PROVIDE 1" COPPER PIPE IW FROM DRAIN PAN ON EACH UNIT TO FLOOR DRAIN WITH P TRAP AND 1" AIR GAP, MOUNT ALL PIPES WITHIN WALK-IN BOX WITH 1" HOLD-OFF SUPPORTS.	
32M	WALK-IN FREEZER: PROVIDE 1" COPPER PIPE IW FROM DRAIN PAN ON EACH UNIT TO FLOOR DRAIN WITH P TRAP AND 1" AIR GAP, MOUNT ALL PIPES WITHIN WALK-IN BOX WITH 1" HOLD-OFF SUPPORTS, PROVIDE HEAT TRACE REFER TO ELECTRICAL DRAWING.	
40A	POT SINK: PROVIDE 3/4" CW AND 3/4" HW AT 14" AFF AND 8" OC WITH BVS & CV, CONNECT TO OWNER SUPPLIED FAUCET WITH COPPER PIPING, PROVIDE 2" COPPER PIPE IW (MANIFOLD ALL COMPARTMENT DRAINS INTO ONE LINE) TO FS WITH 2" AIR GAP, OR, IF REQUIRED BY LOCAL CODE, INSTALL 2" COPPER PIPE DIRECTLY TO SEWER SYSTEM, INSTALL OWNER SUPPLIED LEVER DRAIN STOPS, SEE DETAIL ON SHEET P-500.	
40B	FAUCET FOR CHEM: T&S BRASS MODEL #B-0669-POL	
41B	SINGLE BOWL PREP SINK: PROVIDE 3/4" CW AND 3/4" HW AT 14" AFF AND 8" OC WITH BVS, TRANSITION TO 3/4" PRIOR TO CONNECTION, CONNECT TO OWNER SUPPLIED FAUCETS WITH COPPER PIPING, PROVIDE 2" COPPER PIPE IW TO FS WITH 2" AIR GAP, OR, IF REQUIRED BY LOCAL CODE, INSTALL 2" COPPER PIPE DIRECTLY TO SEWER SYSTEM, INSTALL OWNER SUPPLIED LEVER DRAIN STOPS.	
41C		
45A	HAND SINK, PROVIDE 3/4" CW AND 3/4" HW AT 24" AFF AND 8" OC WITH CHROME-PLATED, 3/4 TURN BALL VALVES, CONNECT TO OWNER SUPPLIED FAUCETS WITH METAL FLEX PIPING, PROVIDE 2" DRAIN PIPE WITH P TRAP AND WALL MOUNTED CLEAN-OUT, ALL EXPOSED DRAIN PIPES AND FITTINGS TO BE CHROME PLATED, NOT P.V.C.	
PIPE MATERIAL SCHEDULE		
SERVICE	UNDERGROUND	ABOVE GROUND
COLD & HOT WATER	TYPE "K" OR "L" HARD DRAWN COPPER TUBE	PEX
SANITARY WASTE	ISCH. 40 PVC	ISCH. 40 PVC
SANITARY VENT	ISCH. 40 PVC	ISCH. 40 PVC
GAS	---	BLACK STEEL, SCHEDULE 40
INDIRECT DRAIN	---	HARD DRAWN COPPER TUBE TYPE "M"
ISCH. 40 PVC IS PREFERRED IF APPROVED BY AUTHORITY HAVING JURISDICTION.		

PLUMBING KEY NOTES
1. SODA CONDUIT: PROVIDE 4" PVC CONDUIT BELOW FLOOR FROM THE SIDE OF SODA STORAGE RACK TO SODA DISPENSER PER DETAIL #4 ON SHEET P-500.
2. CONDENSATE: ROUTE SHARED CONDENSATE LINE THROUGH WALK-IN COOLER, DO NOT RUN THROUGH WALK-IN FREEZER. PROVIDE 1" INSULATED CONDENSATE DRAIN PIPE FROM THE EVAPORATIVE COIL, DISCHARGE TO FLOOR SINK OR MOP SINK WITH AIR GAP OF TWICE PIPE DIAMETER, INSTALL AT MINIMUM 76" HEIGHT A.F.F. REFER TO DETAIL #2 ON SHEET P-500.
3. NOT USED.
4. PROVIDE TRAP PRIMER FOR FLOOR DRAIN. SEE DETAILS #9 & #17 ON DWG P-500.
5. RELIEF VALVE: PROVIDE 3/4" PIPE FULLY INSULATED, CONTINUE AND STOP AT 6" ABOVE GROUND AT FLOOR DRAIN.
6. NOT USED
7. 3/4" CONDENSATE DRAIN UP TO MECHANICAL UNIT ON ROOF.
8. CONDENSATE DRAIN DOWN TO FLOOR SINK WITH AIR GAP.
9. 1" CONDENSATE DRAIN UP TO MECHANICAL UNIT ON ROOF.



PANDA RESTAURANT GROUP INC.  
1683 Walnut Grove Ave.  
Rosemead, California 91770  
Telephone: 626.799.9898  
Facsimile: 626.372.8288

All ideas, designs, arrangement and plans indicated, or represented by this drawing are the property of Panda Express Inc. and were created for use on this specific project. None of these ideas, designs, arrangements or plans may be used by or disclosed to any person, firm, or corporation without the written permission of Panda Express Inc.

REVISIONS:

1	100% SUBMITTAL
---	----------------

ISSUE DATE:

1	100% SUBMITTAL
---	----------------

CHECKED BY: STAFF  
DRAWN BY: STAFF

PANDA PROJECT #: B1-17-D5167  
ARCH PROJECT #:

don penn consulting engineer  
1301 SOLANA BLVD., BLDG. 1,  
SUITE 1420  
WESTLAKE, TEXAS 76262  
Phone: 817-410-2858  
Fax: 817-251-8411

Professional Certification

I hereby certify that these documents were prepared or approved by me, and that I am a duly licensed professional engineer under the laws of the State of Maryland. License number 22242, Expiration Date: 02/03/19

PANDA EXPRESS

NAS PAX RIVER  
PAX RIVER NAVY BASE  
PATUXENT RIVER, MD

P-101

WASTE □ DRAIN PL □

CONSTRUCTION SET - 2017/07/30