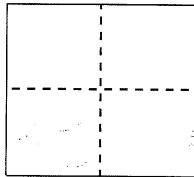


CORNER RECORD

BK 52 PG 30Document Number CR5729City of Berkeley (APN 64-4255-13)County of Alameda, CaliforniaBrief Legal Description Street monument "B1373" as shown on Parcel Map 126, (47 PM 64), near 22 Roble Road.

CORNER TYPE

Government Corner ☐ Control ☒
Meander ☐ Property ☐
Rancho ☐ Other ☐

Date of Survey March 21, 2013

COORDINATES (Optional)

N. _____
E. _____
Zone _____ NAD27 ☐ NAD83 ☐
NAD83 Epoch _____
Elev. _____
Vert. Datum: NGVD29 ☐ NAVD88 ☐
Meas. Units: Metric ☐ Imperial ☐

Pre-Construction (waterline) Corner Record

Corner - Left as found ☒ Found and tagged ☐ Established ☐ Reestablished ☐ Rebuilt ☐

Identification and type of corner found: Evidence used to identify or procedure used to establish or reestablish the corner:
Found street monument that could be damaged or destroyed by planned water line construction project.

Monument was referenced as shown on page 2. The purpose of this Corner Record is to preserve possible evidence only; no attempt was made to determine the relationship to property, centerline, or right of way lines.

A description of the physical condition of the monument as found and as set or reset:

Monument was found in good condition and was referenced with four set RPs representing two intersecting lines.
See page 2.

Reference EBMUD Field Book 4491, Page 33 (Taaning/Chou)

SURVEYOR'S STATEMENT

This Corner Record was prepared by me or under my direction in conformance with
the Professional Land Surveyor's Act on June 18, 2013

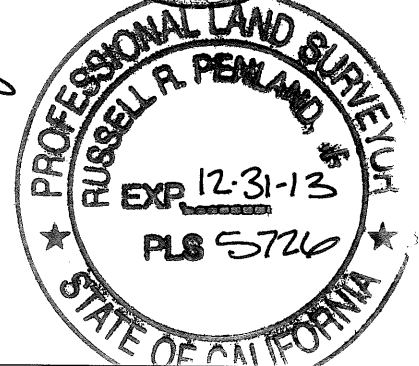
Signed R. Lee Hixson P.L.S. or R.C.E. No. 4806

COUNTY SURVEYOR'S STATEMENT

This Corner Record was received _____
and examined and filed _____

6-27-13
8-6-13Signed [Signature] P.L.S. or R.C.E. No. 5726Title COUNTY SURVEYOR

County Surveyor's Comment: _____

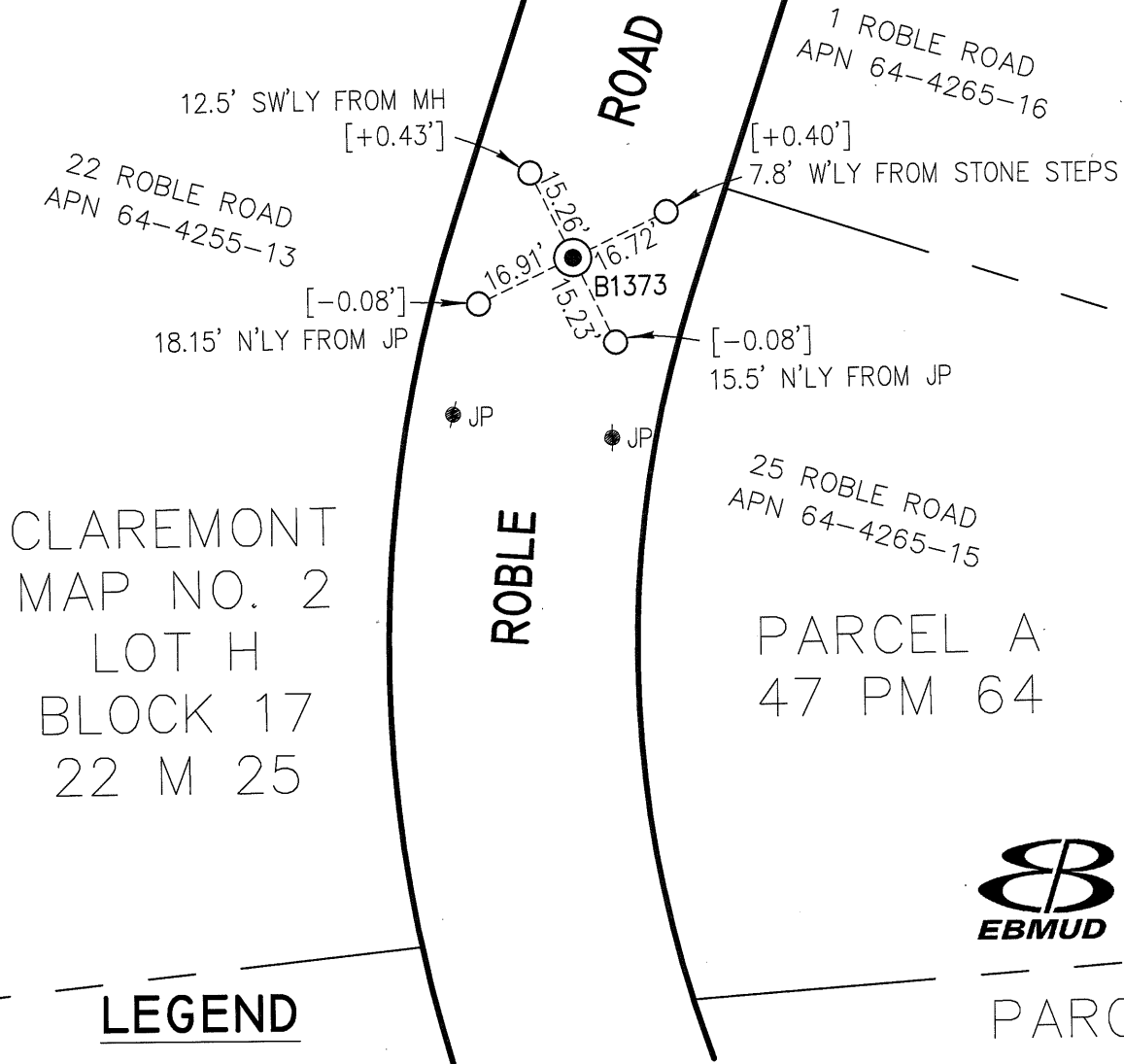
ZR9774

ALAMEDA COUNTY

NOTE:

FOUND FOUR CUT CROSSES IN CURB AND SIDEWALK THAT DID NOT LINE UP; SET NEW RPS.

PARCEL B
94 PM 6



LEGEND



FOUND 2" BRASS DISK WITH PUNCH IN MONUMENT WELL, STAMPED "CITY OF BERKELEY UNLAWFUL TO DEFACE" IN AC PATCH FOR RECENT SEWER TRENCH (AND FOUR STRADDLER NAILS IN AC).



SET CONCRETE ANCHOR NAIL, PUNCHED, WITH 1-1/2" BRASS WASHER STAMPED "EBMUD MON RP" IN TOP OF CURB.



ELEVATION DIFFERENTIAL MEASURED FROM REFERENCE MONUMENT USING A LEICA DNA10 DIGITAL LEVEL.

ADDRESS: 22 ROBLE ROAD, BERKELEY
APN: 64-4255-13

CR# 5729

CR