

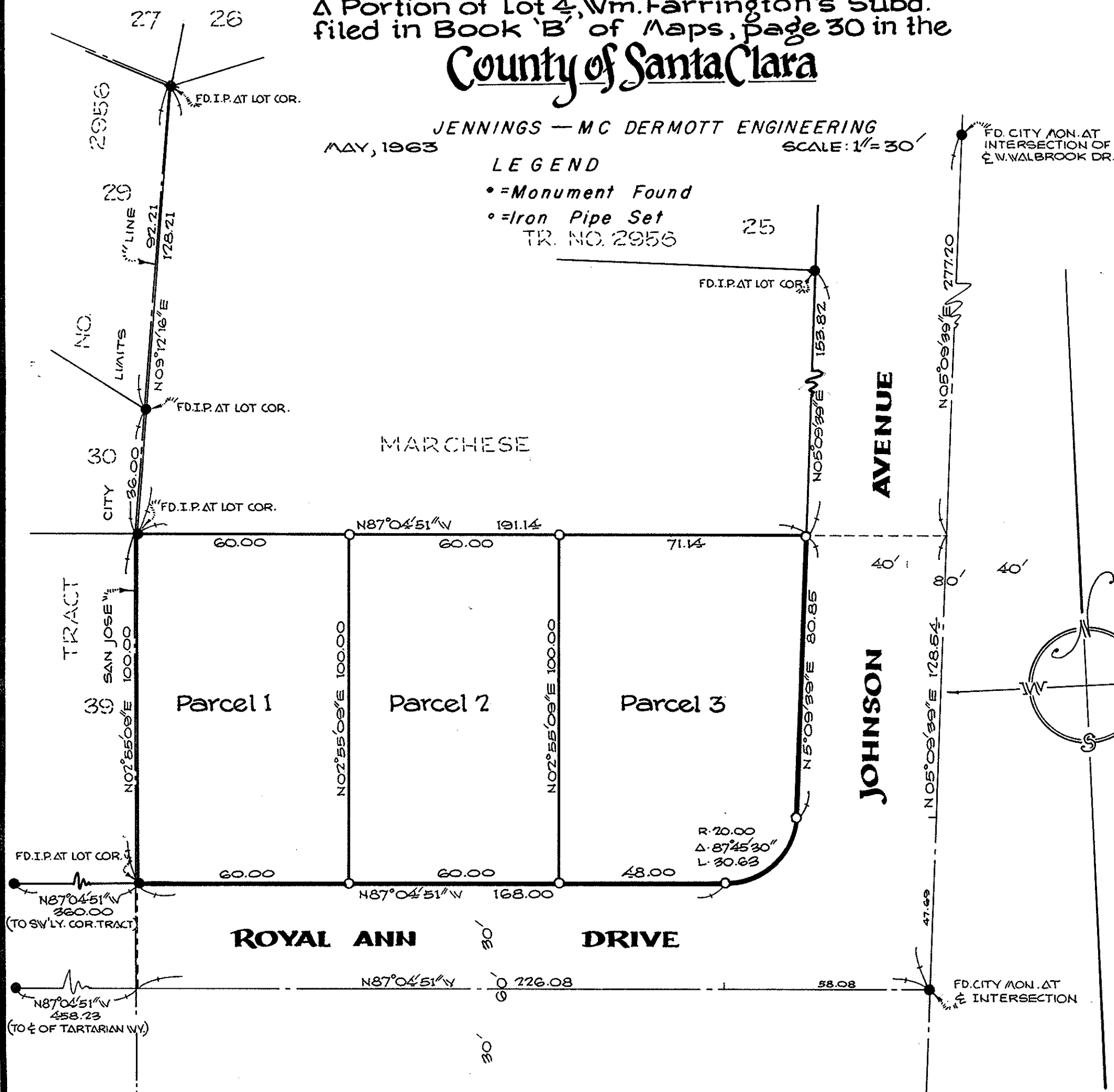
RECORD OF SURVEY

For Schulte-Camp, Inc.
A Portion of Lot 4, Wm. Farrington's Subd.
filed in Book 'B' of Maps, Page 30 in the
County of Santa Clara

JENNINGS - MC DERMOTT ENGINEERING
MAY, 1963 SCALE: 1" = 30'

LEGEND

- = Monument Found
- = Iron Pipe Set
- TR. NO. 2956



BASIS OF BEARINGS

The bearing of N. 87° 04' 51" W. for the centerline of Royal Ann Drive as shown upon Tract No. 2956, a map of which was filed for record in Book 198 of Maps, pages 10 and 11, Santa Clara County Records, was taken as basis for all bearings used hereon.

SURVEYOR'S CERTIFICATE

This map correctly represents a survey made by me or under my direction in conformance with the requirements of Chapter 15 of Division 3 of the Business and Professions Code at the request of Ken Camp in May, 1963

Robert G. McDermott
Licensed Land Surveyor No. 2734

COUNTY SURVEYOR'S CERTIFICATE

This map has been examined for conformance with the requirements of Chapter 15 of Division 3 of the Business and Professions Code this 28 day of May, 1963

James T. Pott County
Surveyor, Santa Clara County.

By *Dean P. Larson*
Deputy

COUNTY RECORDER'S CERTIFICATE

2411518

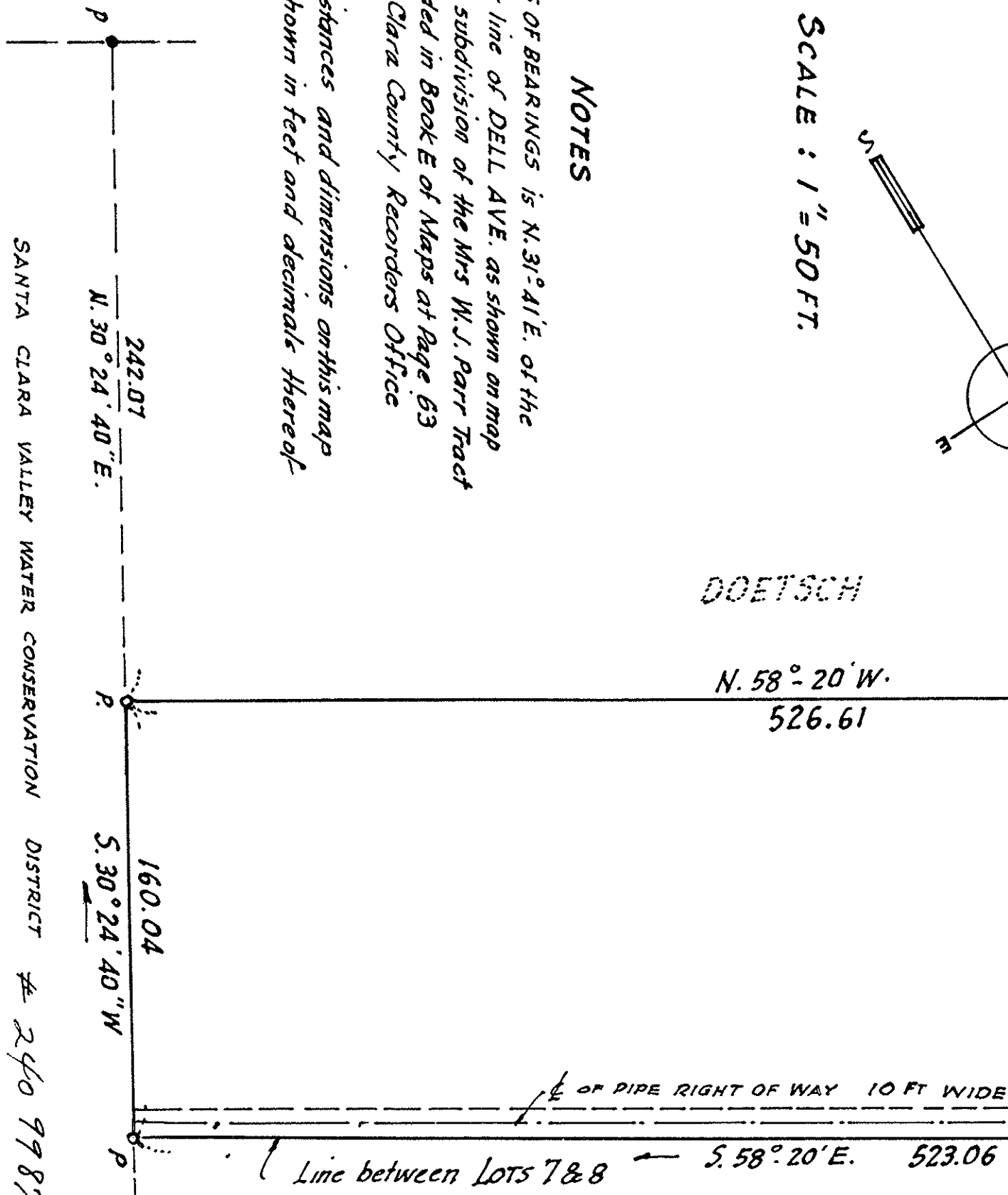
Filed for record this 28 day of May - 1963
at 1:52 P.M. in Book 161 of Maps at Page 47
at the request of Robert G. McDermott.

#5.00 *Paul R. Teilh*, County Recorder of
Santa Clara County, California
By *Donald E. Robinson*
Deputy

NOTES

BASIS OF BEARINGS is N. 31° 41' E. of the center line of DELL AVE. as shown on map of the subdivision of the Mrs. W. J. Parr Tract Recorded in Book E of Maps at Page 63 Santa Clara County Records Office

All distances and dimensions on this map are shown in feet and decimal thereof



DOETSCH

SPADAFORD

FILED FOR RECORD, THIS 27 DAY OF MAY, 1963, AT 9:02 P.M. in Book 161 of Maps at Page 47, at the request of E. N. MONTAGUE
PAUL R. TEILH
Recorder
#5.00 By *Dean P. Larson*
Deputy

SURVEYOR'S CERTIFICATE

This map correctly represents a survey made by me or under my direction in conformance with the requirements of Chapter 15 of Division 3 of the Business and Professions Code this 28 day of May, 1963 at the request of Ralph P. Doetsch in March 1963

R. G. McDermott
R.C.E. 6307

COUNTY SURVEYOR'S CERTIFICATE

This map has been examined for conformance with the requirements of Chapter 15 of Division 3 of the Business and Professions Code this 28 day of May, 1963

By *Dean P. Larson*
DEPUTY

LEGEND

- = Iron pipe found
- = Iron Pipe Set
- = Railroad Spike found
- = Nail found
- = Nail Set

RECORD OF SURVEY MAP IN

CITY OF CAMPBELL
SANTA CLARA COUNTY, CALIF.
PORTION OF LOT 8 OF THE
SUBDIVISION OF MRS. W. J. PARR
TRACT-Map Bk E Pg 63. MAR. 1963
E. N. MONTAGUE, CIVIL ENGINEER
LOS GATOS, CALIFORNIA