

BK43 Pg 47

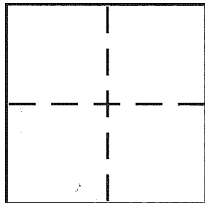
CORNER RECORD

City of BERKELEY

Document Number CR 4786

County of ALAMEDA, California

Brief Legal Description CITY MONUMENT B0628



CORNER TYPE

Government Corner ☐ Control ☒
Meander ☐ Property ☐
Rancho ☐ Other ☐
Date of Survey 12-14-2011

COORDINATES (Optional)

N. _____
E. _____
Zone _____ NAD27 ☐ NAD83 ☐
NAD83 Epoch _____
Elev. _____
Vert. Datum: NGVD29 ☐ NAVD88 ☐
Meas. Units: Metric ☐ Imperial ☐

Corner - Left as found ☒ Found and tagged ☐ Established ☐ Reestablished ☐ Rebuilt ☐

Identification and type of corner found: Evidence used to identify or procedure used to establish or reestablish the corner:

SEE OTHER SIDE

In compliance with Section 8771 of the Professional Land Surveyors' Act, this corner record is being filed to ESTABLISH the position of an existing monument PRIOR to street or highway construction.

A description of the physical condition of the monument as found and as set or reset: _____

SEE OTHER SIDE

SURVEYOR'S STATEMENT

This Corner Record was prepared by me or under my direction in conformance with

the Land Surveyor's Act on JANUARY 10 2012

Signed Robert J. Brunel P.L.S. or R.C.E. No. 4961



COUNTY SURVEYOR'S STATEMENT

This Corner Record was received _____

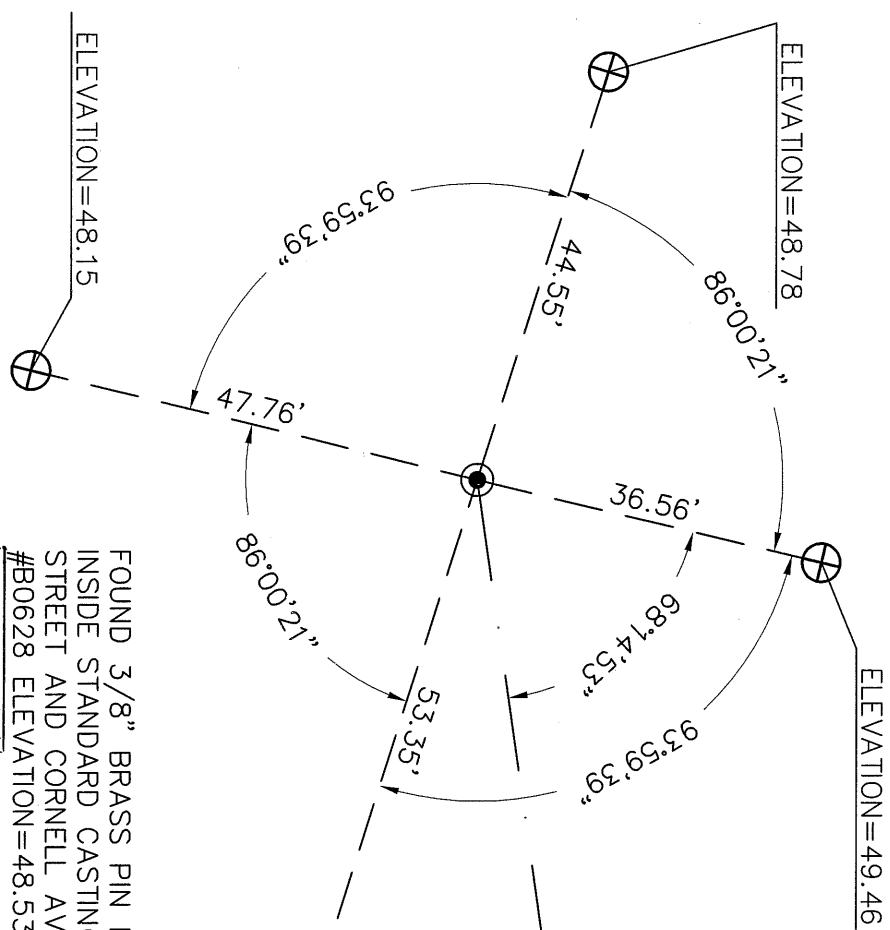
and examined and filed _____

Signed Russell R. Penland P.L.S. or R.C.E. No. 5726

Title COUNTY SURVEYOR

County Surveyor's Comment _____





FOUND 3/8" BRASS PIN IN CONCRETE
INSIDE STANDARD CASTING AT CEDAR
STREET AND CORNELL AVENUE
#B0628 ELEVATION=48.53
PT 5545

FOUND 3/8" BRASS PIN IN CONCRETE
INSIDE STANDARD CASTING AT CEDAR
STREET AND CURTIS STREET #B0629
ELEVATION=52.63
VD 23 F6

- LEGEND**
- FOUND CITY MONUMENT AS NOTED
 - + CUT CROSS IN CONCRETE CURB
 - ⊕ CUT CROSS IN CONCRETE SIDEWALK

CORNER RECORD

TO REFERENCE MONUMENT B0628
AT CEDAR STREET AND CORNELL AVENUE
CITY OF BERKELEY, COUNTY OF ALAMEDA, CALIFORNIA
DECEMBER 14, 2011
SCALE: 1"=20'

AA##AA# ALA. CO. MON. ID