

1332

COUNTY RECORDER'S CERTIFICATE
 Filed for record this 14th day of
 December 1966 at 10:00 A.M.
 in Book 5 of Maps of page 62 at
 the request of Gordon C. Holmes.

Gordon C. Holmes
 COUNTY RECORDER, MONO COUNTY

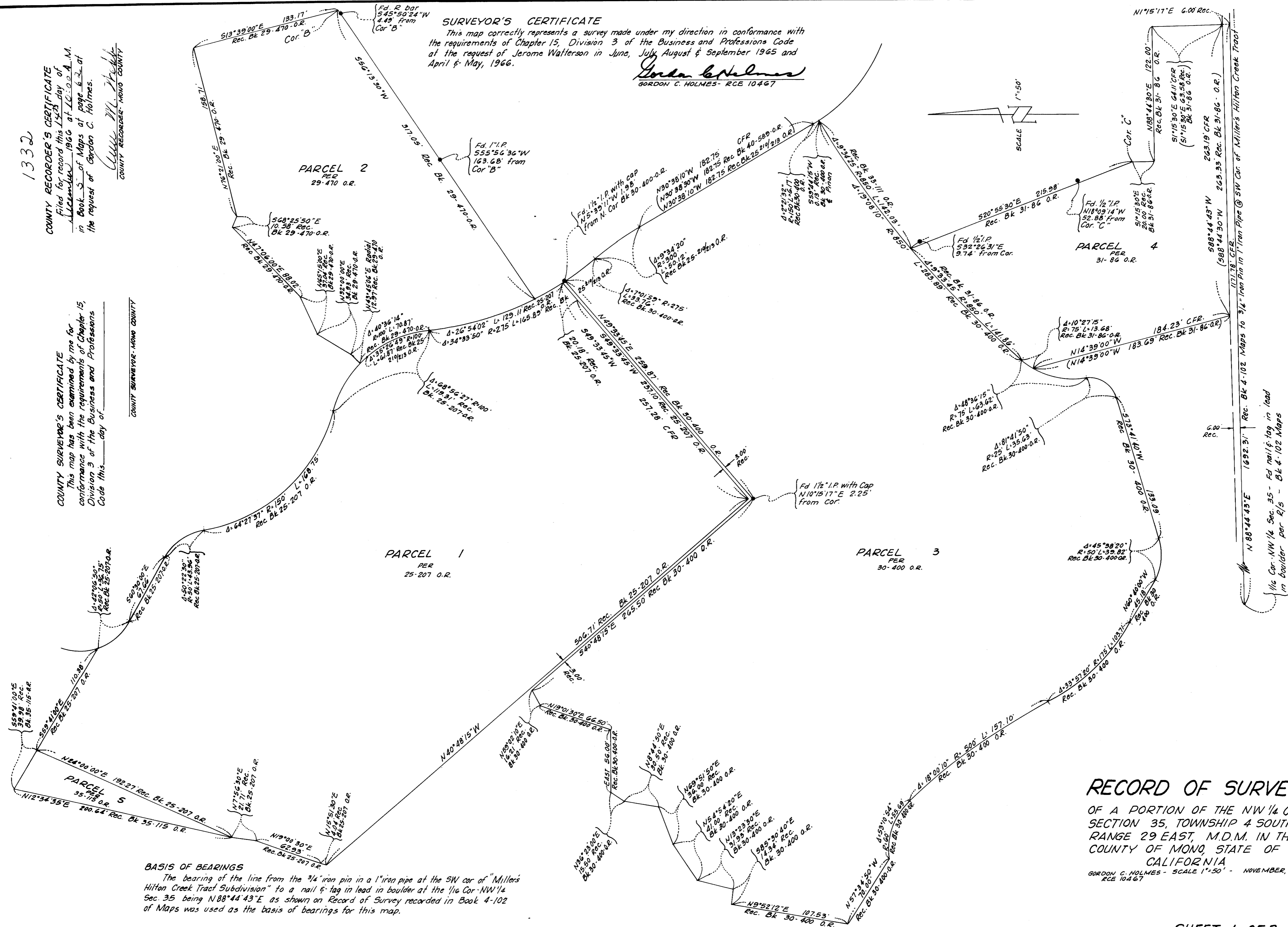
COUNTY SURVEYOR'S CERTIFICATE
 This map has been examined by me for
 conformance with the requirements of Chapter 15,
 Division 3 of the Business and Professions
 Code this day of

COUNTY SURVEYOR, MONO COUNTY

SURVEYOR'S CERTIFICATE

This map correctly represents a survey made under my direction in conformance with
 the requirements of Chapter 15, Division 3 of the Business and Professions Code
 at the request of Jerome Watterson in June, July, August & September 1965 and
 April & May, 1966.

Gordon C. Holmes
 GORDON C. HOLMES - RCE 10467



RECORD OF SURVEY

OF A PORTION OF THE NW 1/4 OF
 SECTION 35, TOWNSHIP 4 SOUTH,
 RANGE 29 EAST, M.D.M. IN THE
 COUNTY OF MONO, STATE OF
 CALIFORNIA

GORDON C. HOLMES - SCALE 1"=50' - NOVEMBER, 1966
 RCE 10467