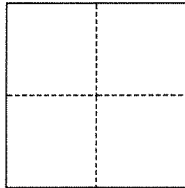


CORNER RECORD

Agency Index BK 143 PG 83
Document Number CR 15794

City of Unincorporated Eden Township County of Alameda, California
Brief Legal Description Monument at Lakecrest Court at the end of the cul-de-sac

CORNER TYPE



☐ Government Corner ☒ Control
☐ Meander ☐ Property
☐ Rancho ☐ Other

Date of Survey September 20, 2021

COORDINATES (Optional)

N. _____ E. _____
Elevation _____
Units ☐ Metric ☒ U.S. Survey Foot
Horizontal Datum _____
Zone _____ Epoch Date _____
Vertical Datum _____
☐ Complies with Public Resources Code §§8801-8819
☐ Complies with Public Resources Code §§8890-8902

PLS Act Ref.: ☐ 8765(d) ☒ 8771 ☐ 8773 ☐ Other:
Corner/
Monument: ☒ Left as found ☐ Established ☐ Rebuilt ☒ Pre-Construction
☐ Found and tagged ☐ Reestablished ☒ Referenced ☐ Post-Construction

Narrative of corner identified and monument as found, set, reset, replaced, or removed:

☒ See sheet #2 for description(s):

Found pin monument in monument well. Set reference ties prior to construction.
Alameda County Monument ID #NE44U7

SURVEYOR'S STATEMENT

This Corner Record was prepared by me or under my direction in conformance with

the Professional Land Surveyors' Act on September 24, 2021

Signed Denise D. Baker P.L.S. or R.C.E. No. PLS 7947



COUNTY SURVEYOR'S STATEMENT

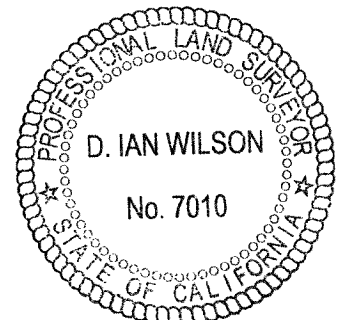
This Corner Record was received _____

and examined and filed JAN 9 6 2022

Signed D. Ian Wilson P.L.S. or R.C.E. No. 7010

Title ALAMEDA COUNTY SURVEYOR

County Surveyor's Comment





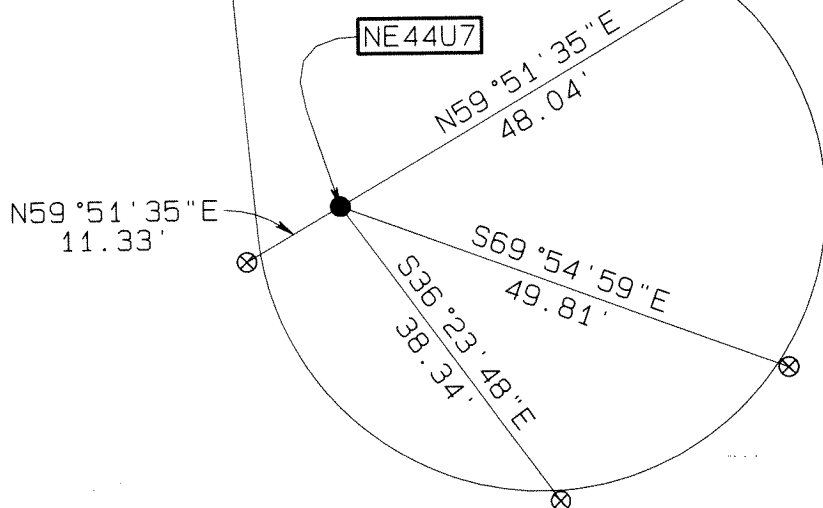
● FOUND PIN MONUMENT
IN MONUMENT WELL

⊗ SET MAG NAIL & TAG (LS 7947)
IN CONCRETE CURB

AA##A# ALAMEDA COUNTY MONUMENT ID

LAKECREST CT

18428 LAKECREST CT
APN 84B-473-27



Prepared by:
CONSTRUCTION SURVEY, INC.
800 BERKELEY WAY, #201
BERKELEY, CA 94710

JOB NO. 210901
SCALE: 1"=20'
9/21/2021