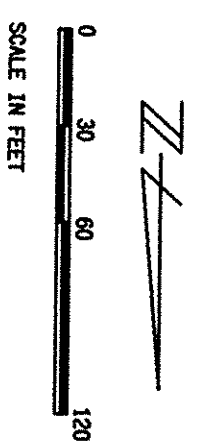


RECIPROCAL ACCESS EASEMENT AND PRIVATE UTILITY EASEMENT

LEGEND

— DISTINCTIVE BORDER LINE
— CENTER LINE
— PROPOSED EASEMENT LINE
— P.S.U.E.
— FOUND STANDARD CITY MONUMENT,
5.00' OFFSET FROM CENTERLINE
— PUBLIC SERVICE UTILITY EASEMENT



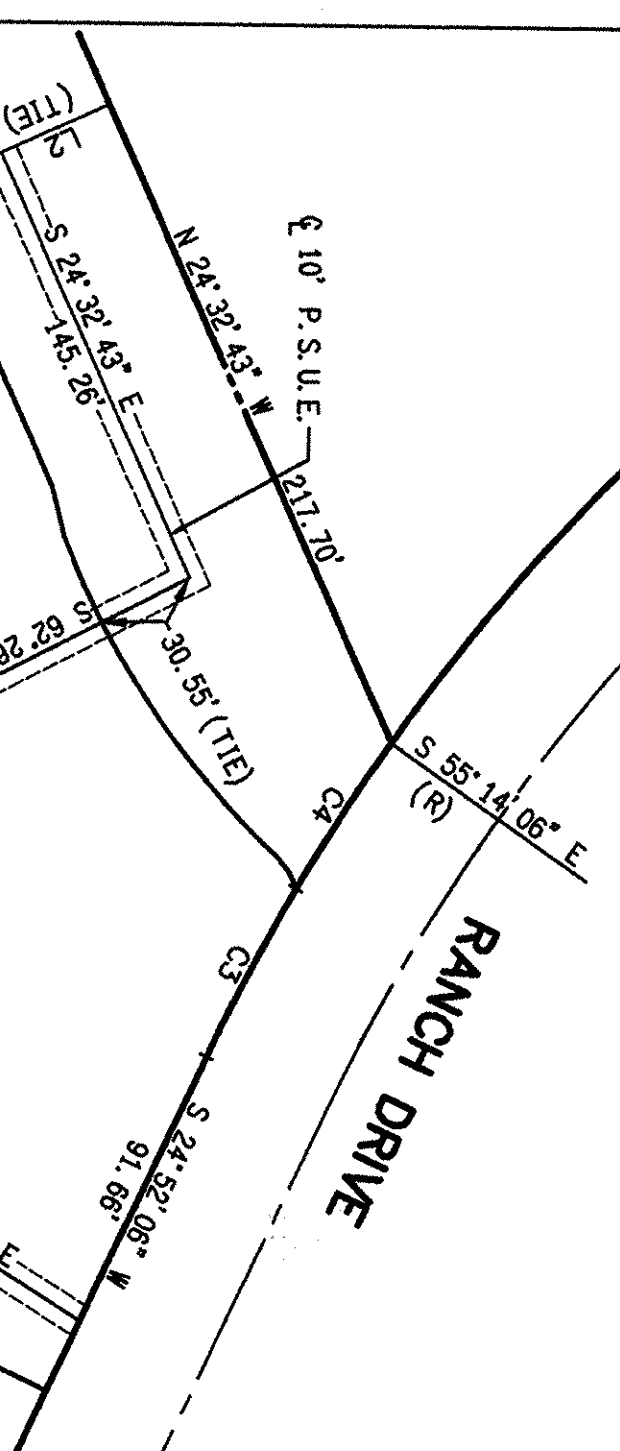
MILPITAS
SCALE: 1" = 60'
JANUARY, 1996

BEING A SUBDIVISION OF PARCEL FOUR
AS SHOWN UPON THAT CERTAIN PARCEL MAP
FILED FOR RECORD ON DECEMBER 5, 1994
IN BOOK 661 OF MAPS AT PAGES 23 AND 24,
SANTA CLARA COUNTY RECORDS.

KIER & WRIGHT
CIVIL ENGINEERS & SURVEYORS, INC.
3350 Scott Boulevard, Building 22 (408) 727-6665
Santa Clara, California 95054 FAX (408) 727-5641

PARCEL MAP

PUBLIC SERVICE UTILITY EASEMENT



NOTE:
FOR BEARINGS ASSOCIATED WITH "TIE"
DISTANCES, SEE PROPERTY LINES ON
SHEET 2 OF 3.

NOTE:
FOR BEARINGS ASSOCIATED WITH "TIE"
DISTANCES, SEE PROPERTY LINES ON
SHEET 2 OF 3.

LINE TABLE:

LINE	BEARING	DISTANCE
L1	S 35° 56' 02" E	53.62'
L2	S 65° 27' 17" W	37.00'
L3	S 80° 16' 00" W	81.35'
L4	N 06° 10' 53" E	58.72'
L5	N 13° 57' 01" W	16.36'
L6	S 65° 27' 17" W	26.00'
L7	S 65° 27' 17" W	67.53'
L8	S 24° 32' 43" E	79.01'
L9	N 65° 27' 17" E	30.00'
L10	N 24° 32' 43" W	77.37'
L11	S 87° 56' 39" W	30.00'
L12	S 80° 15' 49" W	67.81'
L13	S 24° 32' 43" E	23.03'
L14	S 71° 43' 01" W	15.09'
L15	S 65° 27' 17" W	12.00'
L16	S 65° 27' 17" W	55.00'
L17	N 09° 44' 00" W	26.24'
L18	S 80° 16' 00" W	19.99'
L19	N 09° 44' 00" W	24.00'
L20	N 80° 16' 00" E	19.99'
L21	S 35° 56' 02" E	63.14'
L22	N 80° 16' 00" E	59.02'
L23	S 73° 45' 45" E	55.50'
L24	S 80° 15' 49" W	75.30'
L25	S 80° 16' 00" W	59.42'
L26	S 65° 27' 17" W	50.06'
L27	N 37° 23' 20" E	35.74'
L28	N 80° 16' 00" E	55.01'
L29	S 65° 27' 17" W	14.33'
L30	S 60° 27' 17" W	82.75'

CURVE TABLE:

CURVE	RADIUS	DELTA	LENGTH
C1	125.00'	12° 48' 40"	27.95'
C2	20.00'	90° 48' 39"	31.70'
C3	658.00'	5° 09' 46"	59.29'
C4	658.00'	4° 44' 02"	54.37'
C5	100.00'	4° 12' 31"	7.35'
C6	75.00'	36° 49' 15"	48.20'
C7	95.00'	68° 13' 35"	113.12'
C8	953.05'	4° 27' 44"	74.22'
C9	81.50'	24° 04' 10"	34.24'
C10	81.50'	15° 27' 31"	21.99'
C11	161.50'	26° 29' 30"	74.67'
C12	20.00'	45° 38' 54"	15.93'
C13	175.00'	12° 51' 05"	39.25'
C14	10.00'	53° 07' 49"	9.27'
C15	10.00'	64° 09' 28"	11.20'
C16	983.05'	7° 40' 37"	131.72'
C17	983.05'	0° 37' 32"	10.41'
C18	10.00'	97° 03' 16"	16.94'
C19	5.00'	104° 48' 32"	9.15'
C20	3.00'	90° 00' 00"	4.71'
C21	20.00'	30° 09' 54"	10.53'
C22	68.00'	149° 50' 06"	177.83'
C23	20.00'	37° 27' 33"	13.08'
C24	75.00'	63° 47' 58"	83.51'
C25	10.00'	71° 18' 04"	12.44'
C26	95.00'	97° 16' 19"	161.28'
C27	5.00'	85° 32' 03"	7.46'
C28	20.00'	75° 11' 28"	26.25'
C29	50.00'	14° 48' 43"	12.93'
C30	20.00'	98° 35' 47"	34.42'
C31	148.00'	46° 29' 48"	120.10'
C32	20.00'	58° 19' 23"	20.36'
C33	100.00'	15° 26' 43"	26.96'
C34	20.00'	90° 00' 00"	31.42'
C35	10.00'	90° 00' 00"	15.71'
C36	175.00'	50° 23' 27"	153.91'
C37	20.00'	84° 22' 09"	29.45'
C38	20.00'	87° 36' 31"	30.58'
C39	269.64'	15° 25' 52"	72.62'
C40	19.50'	32° 23' 56"	11.03'

NOTE:
FOR BEARINGS ASSOCIATED WITH "TIE"
DISTANCES, SEE PROPERTY LINES ON
SHEET 2 OF 3.

NOTE:
FOR BEARINGS ASSOCIATED WITH "TIE"
DISTANCES, SEE PROPERTY LINES ON
SHEET 2 OF 3.

LINE TABLE:

LINE	BEARING	DISTANCE
L1	S 35° 56' 02" E	53.62'
L2	S 65° 27' 17" W	37.00'
L3	S 80° 16' 00" W	81.35'
L4	N 06° 10' 53" E	58.72'
L5	N 13° 57' 01" W	16.36'
L6	S 65° 27' 17" W	26.00'
L7	S 65° 27' 17" W	67.53'
L8	S 24° 32' 43" E	79.01'
L9	N 65° 27' 17" E	30.00'
L10	N 24° 32' 43" W	77.37'
L11	S 87° 56' 39" W	30.00'
L12	S 80° 15' 49" W	67.81'
L13	S 24° 32' 43" E	23.03'
L14	S 71° 43' 01" W	15.09'
L15	S 65° 27' 17" W	12.00'
L16	S 65° 27' 17" W	55.00'
L17	N 09° 44' 00" W	26.24'
L18	S 80° 16' 00" W	19.99'
L19	N 09° 44' 00" W	24.00'
L20	N 80° 16' 00" E	19.99'
L21	S 35° 56' 02" E	63.14'
L22	N 80° 16' 00" E	59.02'
L23	S 73° 45' 45" E	55.50'
L24	S 80° 15' 49" W	75.30'
L25	S 80° 16' 00" W	59.42'
L26	S 65° 27' 17" W	50.06'
L27	N 37° 23' 20" E	35.74'
L28	N 80° 16' 00" E	55.01'
L29	S 65° 27' 17" W	14.33'
L30	S 60° 27' 17" W	82.75'