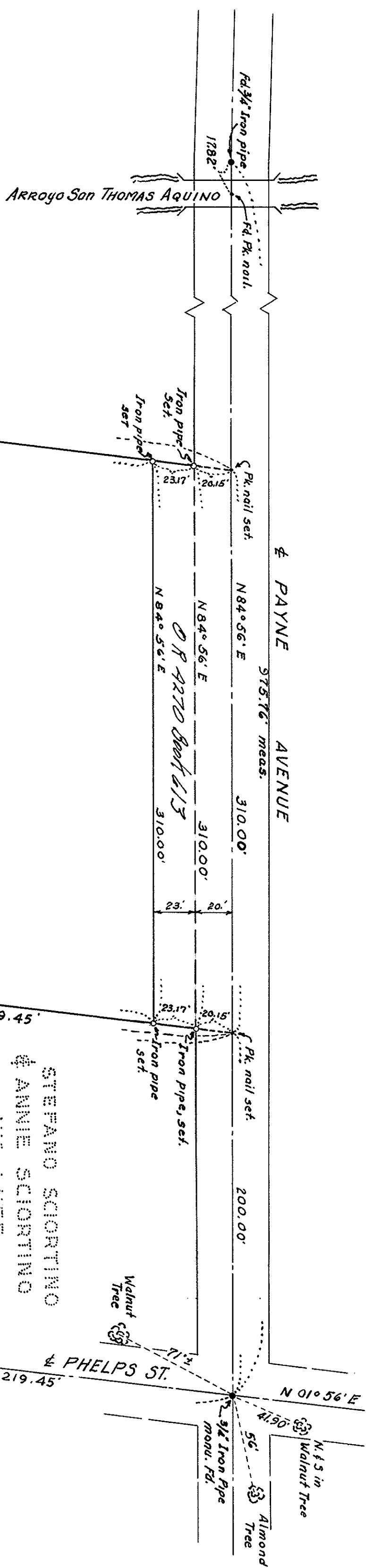


PACIFIC  
WESTERN  
PROPERTIES  
CO.



CERTIFICATE OF SURVEYOR

This map correctly represents a survey made by me or under my direction in conformance with the requirements of Chapter 15 of Division 3 of the Business and Professions Code at the request of Pacific Western Properties Co. in September 1958.

*Calvin M. Fowler*  
Registered Civil Engineer  
Certificate No. 7542

CERTIFICATE OF COUNTY RECORDER

File No. 1564902, Fee \$ 5.92 paid.  
Filed for record this 31<sup>st</sup> day of Dec. 1958  
at 4:29 P.M. in Book 101 of Maps at page 2  
at the request of G. M. Jones

Sylvia C. Tully  
County Recorder  
by *S. B. O'Brien*  
Deputy

CERTIFICATE OF COUNTY SURVEYOR

This map has been examined for conformance with the requirements of Chapter 15 of Division 3 of the Business and Professions Code this 15th day of Dec., 1958.

J. B. Enoch  
Acting County Surveyor  
by *[Signature]*  
Deputy

BASIS OF BEARINGS

The bearing N 84° 56' E on the center line of PAYNE AVENUE as shown upon that certain "Map of PHELPS SUBDIVISION," recorded in Book "D" of Maps, Page 163, records of Santa Clara County, California, was taken as Basis of Bearings for this map.

RECORD OF SURVEY

BEING A PORTION OF LOT 17  
OF THE PHELPS SUBDIVISION  
RECORDED IN BOOK "D" OF MAPS, PAGE 163.  
RECORDS OF SANTA CLARA COUNTY, CALIFORNIA

JONES, THENN and ASSOCIATES  
CIVIL ENGINEERS  
550 COLLEGE AVENUE, PALO ALTO, CALIFORNIA

SCALE: 1" = 50'  
OCTOBER 1958