

# CORNER RECORD

Agency Index

BOOK 106 PAGE 81

Document Number

CR 11009

City of SAN LEANDRO AND OAKLANDCounty of ALAMEDA, California

## Brief Legal Description

CITY OF SAN LEANDRO STANDARD MONUMENT AT THE INTERSECTION OF DURANT AVENUE AND KENILWORTH AVENUE. MONUMENT SHOWN UPON PARCEL MAP 10236 (330-PM-14)

## CORNER TYPE

## COORDINATES (Optional)

N. 2096103.6 ± E. 6084008.1 ±☒ ElevationUnits Metric ☐ U.S. Survey Foot ☒Horizontal Datum CCS 83Zone 3 Epoch Date

Vertical Datum

☐ Complies with Public Resources Code §§8801-8819☐ Complies with Public Resources Code §§8890-8902RANCHO  
SAN  
ANTONIO  
(Y PERALTA)Government Corner ☐ Control  
Meander ☐ Property  
Rancho ☐ OtherDate of Survey 1/23/2018PLS Act Ref: ☐ 8765(d) ☒ 8771 ☐ 8773 ☐ Other:Corner/  
Monument: ☒ Left as found ☐ Established ☐ Rebuilt ☒ Pre-Construction  
☐ Found and tagged ☐ Reestablished ☒ Referenced ☐ Post-Construction

Narrative of corner identified and monument as found, set, reset, replaced, or removed:

☒ See sheet #2 for description (s):

FOUND MONUMENT THAT COULD BE DAMAGED OR DESTROYED BY A PROPOSED GAS LINE CONSTRUCTION PROJECT. MONUMENT WAS REFERENCED AS SHOWN ON PAGE 2 OF 2.

THE PURPOSE OF THIS CORNER RECORD IS TO PRESERVE THE LOCATION OF THE MONUMENT PRIOR TO CONSTRUCTION. NO ATTEMPT WAS MADE TO DETERMINE THE RELATIONSHIP BETWEEN THE MONUMENT AND PROPERTY LINES, RIGHT-OF-WAY LINES, CENTERLINES OR OTHER MONUMENTS.

IT IS UNKNOWN IF THIS MONUMENT IS THE EXACT SAME MONUMENT AS SHOWN UPON PARCEL MAP 10236. RECENT SEWER LINE WORK DONE IN THIS AREA.

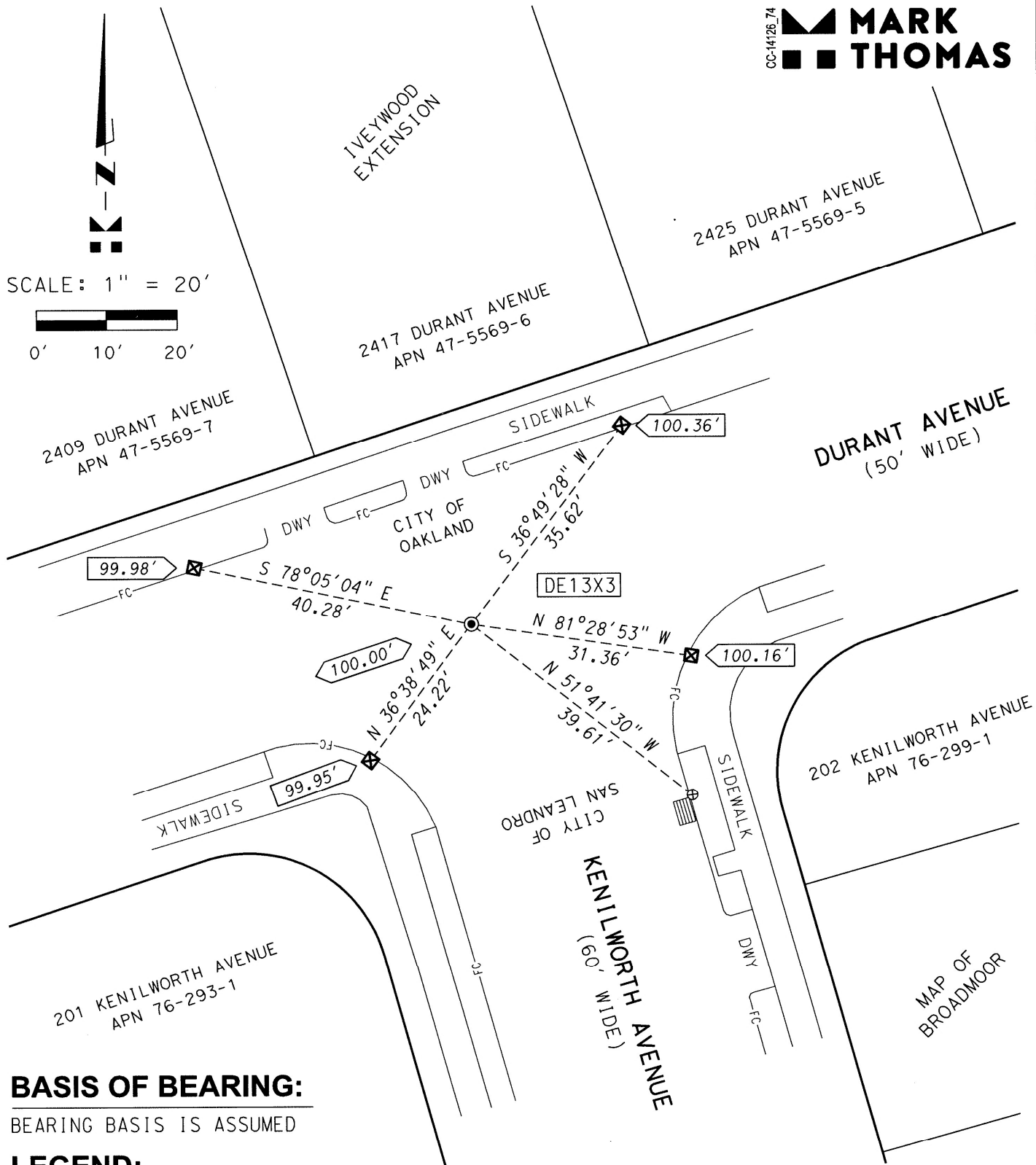
## SURVEYOR'S STATEMENT

This Corner Record was prepared by me or under my direction in conformance with  
the Professional Land Surveyors' Act on MARCH 27, 2018Signed [Signature] P.L.S. or R.C.E. No. 8911

## COUNTY SURVEYOR'S STATEMENT

This Corner Record was received 7 FEBRUARY 2018and examined and filed 24 APRIL 2018Signed [Signature] P.L.S. or R.C.E. No. 6843Title COUNTY SURVEYOR

County Surveyor's Comment



CC-14126.74  
**MARK THOMAS**

**BASIS OF BEARING:**  
BEARING BASIS IS ASSUMED

- LEGEND:**
- ⊙ FOUND 2.5" BRASS DISK STAMPED CITY OF SAN LEANDRO LS 4791 IN WELL
  - ⊠ SET CUT CROSS FOR REFERENCE POINT IN TOP OF CONCRETE CURB
  - ⊕ FOUND CINCH NAIL SET IN TOP OF CATCH BASIN (CITY OF SAN LEANDRO BENCH MARK)
  - 100.00' MONUMENT ELEVATION (ASSUMED)
  - XXX.XX' REFERENCE POINT ELEVATION (ESTABLISHED USING A DIGITAL LEVEL)
  - DE13X3 ALAMEDA COUNTY MONUMENT IDENTIFICATION NUMBER