

CFD-S55

SERVICE MANUAL

E Model

Ver 1.1 2002. 07

The CFD-S55 is a front cabinet changed version of the CFD-S38 MODEL.
This service manual describes only differences from the CFD-S38.
Refer to the service manual for CFD-S38 (9-926-939-00) for other information.

DIFFERENCE OF PARTS LIST

Page	CFD-S38				CFD-S55		
40	<u>Ref. No.</u>	<u>Part No.</u>	<u>Description</u>	<u>Remark</u>	<u>Part No.</u>	<u>Description</u>	<u>Remark</u>
	2	X-3376-916-1	GRILLE (L) ASSY, SPEAKER		X-3380-298-1	GRILLE (L) ASSY, SPEAKER	
	3	X-3376-919-1	GRILLE (R) ASSY, SPEAKER		X-3380-299-1	GRILLE (R) ASSY, SPEAKER	
	5	X-3376-923-1	CABINET (FRONT) SUB ASSY		X-3380-300-1	CABINET (FRONT) SUB ASSY	
	6	3-032-032-01	BUTTON (MAIN)		3-228-238-01	BUTTON, MAIN	

CD RADIO CASSETTE-CORDER

MEMO

CFD-S55

SONY[®]

E Model

SERVICE MANUAL

Ver 1.1 2002. 07

SUPPLEMENT-1

File this supplement with the service manual.

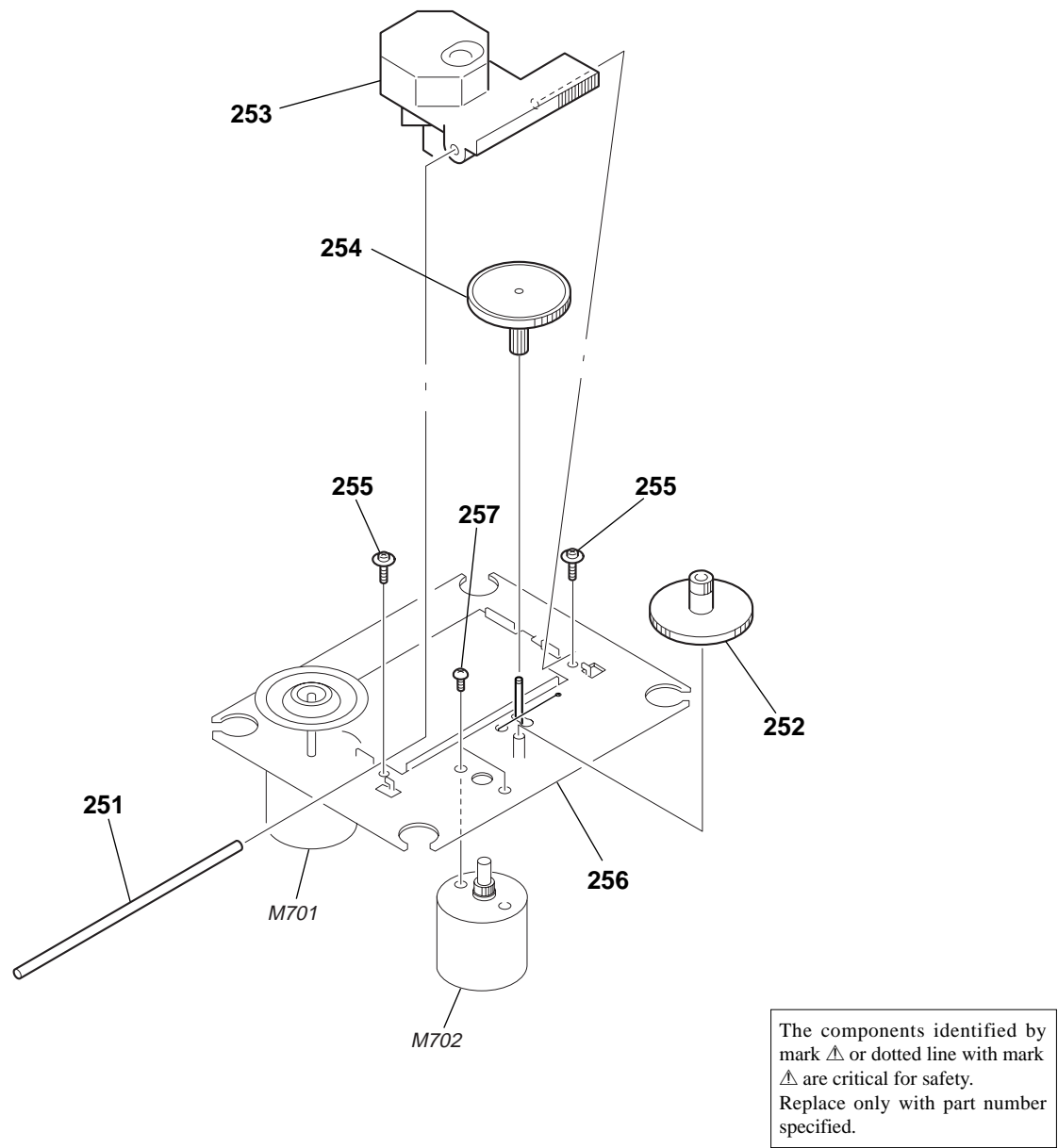
Subject : Change of CD Mechanism

(SPM-02027)

CD mechanism changed to KSM-213CDM from KSM-213RDM after serial No. 1456481.

Please check serial No. when you exchange the parts of CD mechanism.

CD MECHANISM SECTION
(KSM-213RDM)



Ref. No.	Part No.	Description	Remark	Ref. No.	Part No.	Description	Remark
251	2-626-908-01	SHAFT, SLED		256	X-2162-704-1	CHASSIS ASSY (R) (RP), MOTOR (SPINDLE)	
* 252	2-647-408-02	GEAR (B)				(including M701)	
\triangle 253	8-820-161-02	PICK-UP, OPTICAL KSS-213R/C2RP		257	3-713-786-51	SCREW (M2X3)	
* 254	2-169-065-01	GEAR (A)		M702	X-2162-712-1	GEAR ASSY (R) (RP), MOTOR (SLED)	
255	2-169-388-01	TAPPING (M2), +PWB					

MEMO

REVISION HISTORY

Clicking the version allows you to jump to the revised page.

Also, clicking the version at the upper right on the revised page allows you to jump to the next revised page.

[illegible]