

CORNER RECORD

Agency Index

BOOK 109 PAGE 12

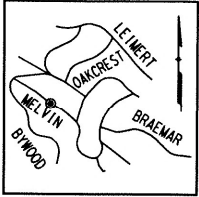
Document Number

CR 11154

City of OAKLANDCounty of ALAMEDA, California

Brief Legal Description

CITY OF OAKLAND (C.O.O.) MONUMENT 10SE44 AS SHOWN UPON MONUMENT MAP 1506B482_244 AND TRACT 505 (14-MAPS-44) NORTHERLY OF 1857 MELVIN ROAD (APN 29A-1347-51).

**CORNER TYPE**

Government Corner ☐ Control
Meander ☐ Property
Rancho ☐ Other

COORDINATES (Optional)

N. 2123684.4 ± E. 6068412.9 ±
Elevation 732.565' (C.O.O. DATUM)
Units Metric ☐ U.S. Survey Foot ☒
Horizontal Datum CCS 83
Zone 3 Epoch Date _____
Vertical Datum _____

Date of Survey 3/8/2018

☐ Complies with Public Resources Code §§8801-8819
☐ Complies with Public Resources Code §§8890-8902

PLS Act Ref: ☐ 8765(d)☒ 8771☐ 8773☐ Other:Corner/
Monument: ☒ Left as found☐ Established☐ Rebuilt☒ Pre-Construction☐ Found and tagged☐ Reestablished☒ Referenced☐ Post-Construction

Narrative of corner identified and monument as found, set, reset, replaced, or removed:

☒ See sheet #2 for description (s):

FOUND MONUMENT THAT COULD BE DAMAGED OR DESTROYED BY A PROPOSED GAS LINE CONSTRUCTION PROJECT. MONUMENT WAS REFERENCED AS SHOWN ON PAGE 2 OF 2.

THE PURPOSE OF THIS CORNER RECORD IS TO PRESERVE THE LOCATION OF THE MONUMENT PRIOR TO CONSTRUCTION. NO ATTEMPT WAS MADE TO DETERMINE THE RELATIONSHIP BETWEEN THE MONUMENT AND PROPERTY LINES, RIGHT-OF-WAY LINES, CENTERLINES OR OTHER MONUMENTS.

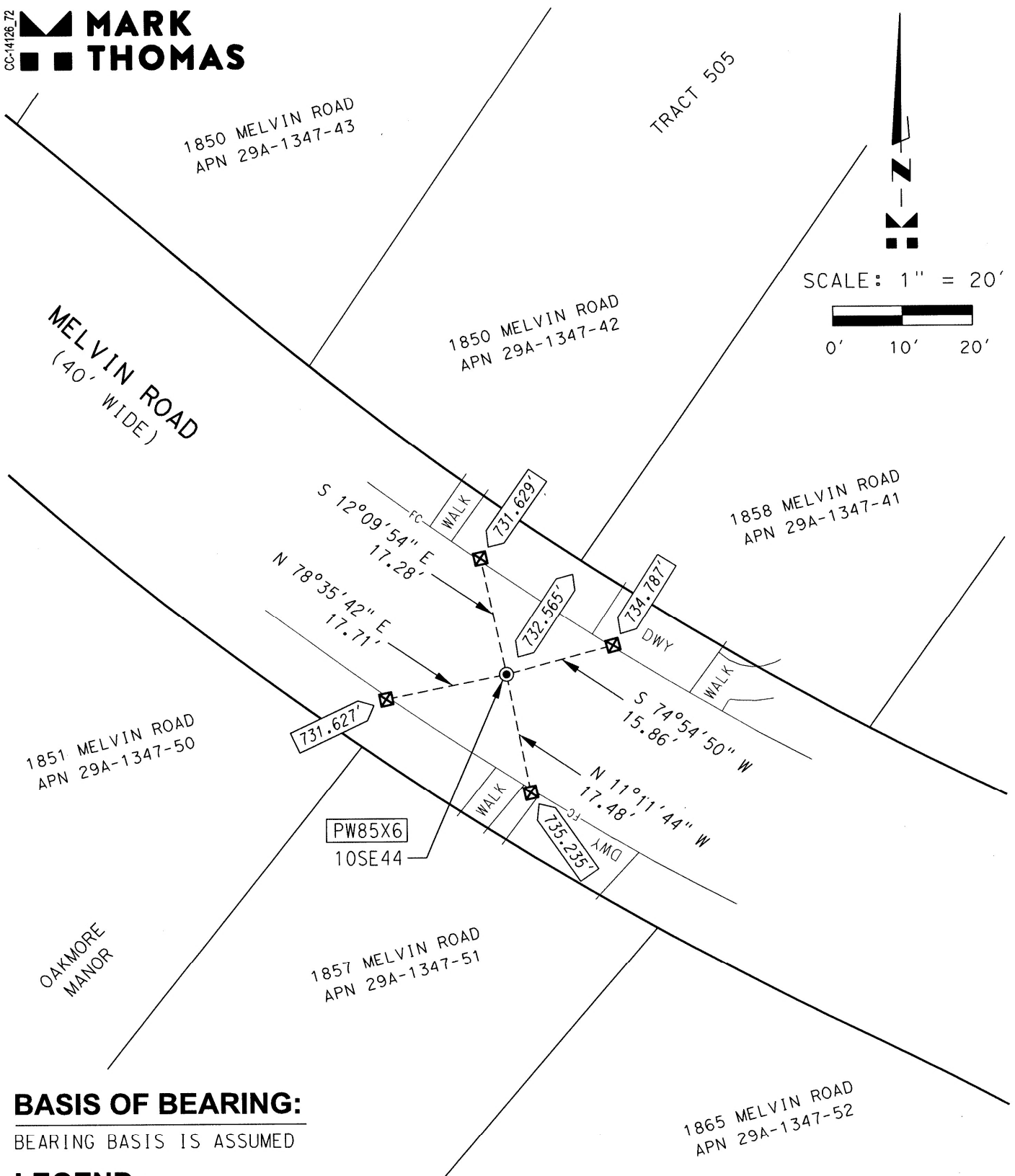
SURVEYOR'S STATEMENT

This Corner Record was prepared by me or under my direction in conformance with
the Professional Land Surveyors' Act on JUNE 6, 2018

Signed [Signature] P.L.S. or R.C.E. No. 8911**COUNTY SURVEYOR'S STATEMENT**This Corner Record was received 27 MARCH 2018and examined and filed 28 JUNE 2018Signed Michael Rubner P.L.S. or R.C.E. No. 6843Title COUNTY SURVEYOR

County Surveyor's Comment _____

CC-14126.72
 **MARK
THOMAS**

**BASIS OF BEARING:**

BEARING BASIS IS ASSUMED

LEGEND:

- FOUND CONCRETE MONUMENT WITH 1/8" PIN IN WELL
- ☒ SET CUT CROSS FOR REFERENCE POINT IN TOP OF CONCRETE CURB
- 732.565' MONUMENT ELEVATION (CITY OF OAKLAND DATUM)
- xxx.xxx' REFERENCE POINT ELEVATION (ESTABLISHED USING A DIGITAL LEVEL)
- PW85X6 ALAMEDA COUNTY MONUMENT IDENTIFICATION NUMBER