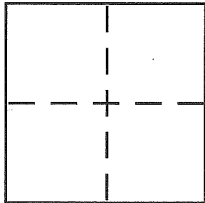


CORNER RECORD

Document Number CR 3343
 City of BERKELEY County of ALAMEDA, California

Brief Legal Description MONUMENT B 1942 (CITY)



CORNER TYPE

Government Corner ☐ Control ☐
 Meander ☐ Property ☐
 Rancho ☐ Other ☒
 Date of Survey 3-19-08

COORDINATES (Optional)

N. _____
 E. _____
 Zone _____ NAD27 ☐ NAD83 ☐
 NAD83 Epoch _____
 Elev. _____
 Vert. Datum: NGVD29 ☐ NAVD88 ☐
 Meas. Units: Metric ☐ Imperial ☐

Corner - Left as found ☒ Found and tagged ☐ Established ☐ Reestablished ☐ Rebuilt ☐

Identification and type of corner found: Evidence used to identify or procedure used to establish or reestablish the corner:

MONUMENT REFERENCE (SEE PAGE 2)

A description of the physical condition of the monument as found and as set or reset:

SEE PAGE 2

SURVEYOR'S STATEMENT

This Corner Record was prepared by me or under my direction in conformance with

the Land Surveyor's Act on MARCH 20, 2008

Signed [Signature] P.L.S or R.C.E. No. PLS 5003

COUNTY SURVEYOR'S STATEMENT

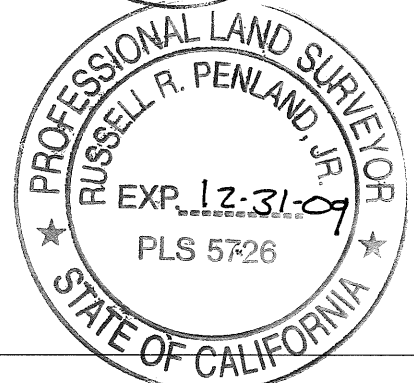
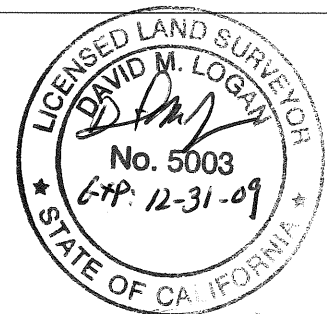
This Corner Record was received 5-2-08

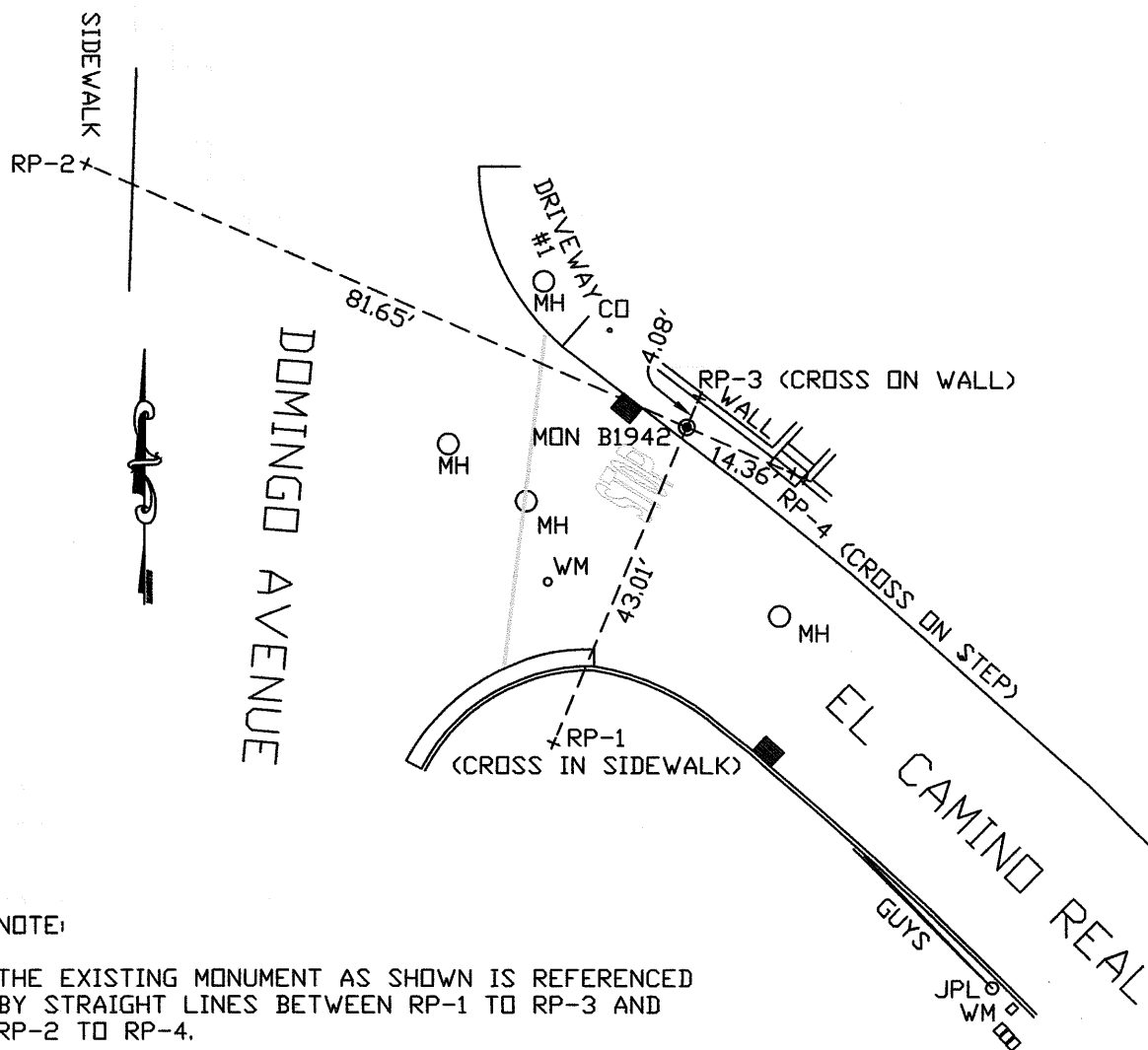
and examined and filed 5-27-08

Signed [Signature] P.L.S or R.C.E. No. 5726

Title COUNTY SURVEYOR

County Surveyor's Comment _____





NOTE:

THE EXISTING MONUMENT AS SHOWN IS REFERENCED BY STRAIGHT LINES BETWEEN RP-1 TO RP-3 AND RP-2 TO RP-4.

LEGEND

- EXISTING STANDARD CITY OF BERKELEY MONUMENT
- + SET REFERENCE CROSS AS NOTED